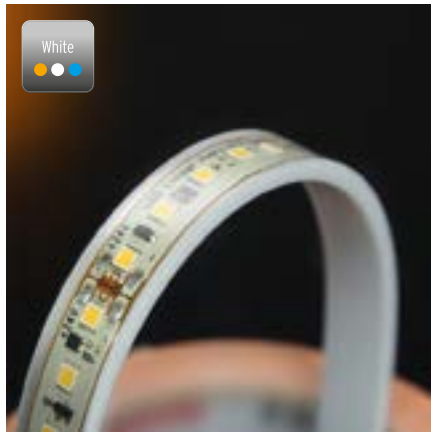


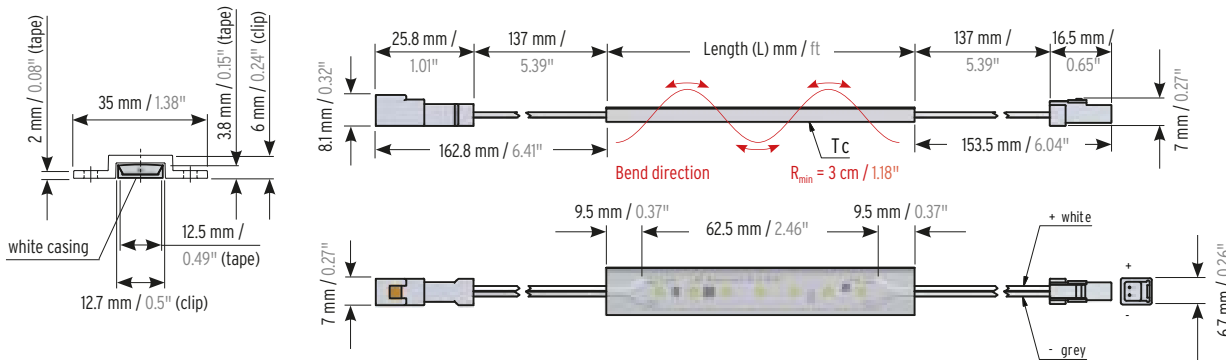
VarioLED™ Flex HYDRA HD White IP67



! CRI up to 95
! up to 125 Lumen/Watt

- ▶ up to 15 W/m / 4.6 W/ft
- ▶ up to 1,880 lm/m / 572 lm/ft
- ▶ One Bin Only: 3 MacAdam
- ▶ up to CRI 95

Abmessungen & verfügbare Längen



Fixture build to length:

L_{min}: 82 mm; L_{max}: 5,019 mm (HD15: 4,019 mm); in 62.5 mm increments
L_{min}: 3.23"; L_{max}: 16.47" (HD15: 13.19"); in 2.46" increments

Tc-point: Entire encapsulated flexboard rear side

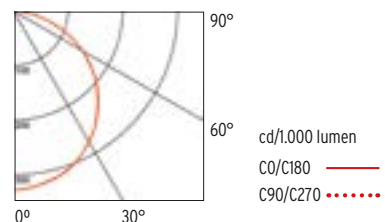
Electrical & output data

Step length	7 LEDs per 62.5 mm / 2.46"	
Voltage	24 Volt (23 V _{min} , 25 V _{max})	
Temperature ⁸	T _{Cmin} = -25°C / -13°F, T _{Cmax} = 70°C / 158°F	
Storage temperature	T _{Smin} = -30°C / -22°F, T _{Smax} = 85°C / 185°F	
Ambient temperature	T _{Amin} = -25°C / -13°F, T _{Amax} = 40°C / 104°F	

VarioLED™ Flex HYDRA	HD6	HD10	HD15
Power (W/m / W/ft) ^A	6 / 1.8	10 / 3.1	15 / 4.6
Efficacy (lm/W) ^A @ W850	118	118	125
CRI / R9 @ W930	95 / 65	95 / 65	85 / 25
max. serial run length (m / ft)	5 / 16.4	5 / 16.4	4 / 13.1
Current	1.2 A/15 mA per Step	2 A/25 mA per Step	2.56 A/40 mA per Step

Color temperature LED tape used	Final color temperature delivered for finished fixture		HD6	HD10	HD15	
	low output	high output	low output	high output	low output	high output
	lumen/meter (lm/m) ^A	lumen/foot (lm/ft) ^A	lumen/meter (lm/m) ^A	lumen/foot (lm/ft) ^A	lumen/meter (lm/m) ^A	lumen/foot (lm/ft) ^A
● W820	2,000 K	2,500 K	410 / 124	680 / 206	1,090 / 331	
● W822	2,200 K	2,900 K	470 / 142	780 / 237	1,250 / 380	
● W825	2,500 K	3,300 K	530 / 161	890 / 270	1,430 / 435	
● W827 W927	2,700 K	3,800 K	480 / 145	800 / 243	1,510 / 459	3,600 K
● W830 W930	3,000 K	4,300 K	490 / 148	810 / 246	1,600 / 487	4,300 K
● W835 W935	3,500 K	5,100 K	500 / 151	830 / 252	1,690 / 514	4,900 K
● W840 W940	4,000 K	6,100 K	510 / 154	860 / 261	1,720 / 523	6,600 K
● W850	5,000 K	9,600 K	710 / 215	1,180 / 359	1,880 / 572	

- ONE BIN ONLY**
- UV protected
- Lifetime: L80/B10 > 60,000 h
- Resistant to solvents
- Photometric code: Wxxx/339
- Saltwater resistant
- LM 79 compliant
- Temporary immersion protection
- LM 80 compliant



^A The given data are typical values. Due to tolerances of the production process and the electrical components, values for light output and electrical power can vary up to 10%.

⁸ The position of the Tc-point is marked on each step of the LED strip. The Tc-point should be measured in thermal equilibrium according to IEC EN 60598-1.



Photo: Floriant Bouvet Fournier

IP67 flexible 24 V linear LED strip up to 7.5 m (24.6") in length. Polyurethane encapsulation offering a premium water proof sealing, UV resistance, chemical stability against urban gazes and protection against abrasion. White lower casing for higher efficiency (better light extraction). Delivered with 200 mm (7.87") IP67 mini connectors on both ends. Constant Voltage LED strip with 62.5 mm (2.46") and a small LED pitch of 8.93 mm (0.35") the first choice for outdoor applications with a direct top view or indirect lighting with low construction depths - with perfectly homogeneous light. Assembled using state of the art automated Reel to Reel (R2R) production process supporting LED Linear™ Tj Away® thin flexible circuit board technology. In combination with ceramic LED packages a thermal resistivity of 18.5 K/W is achieved for an optimal heat dissipation (junction to installation surface)

which guarantees an outstanding lifetime of > 60,000 hrs L80/B10. Each steps embeds 7 high quality japanese LEDs with 3 step MacAdams (SDCM3) binning centered on target CCT (One Bin Only) with an extended photometric code of Wxxx/339 ensuring an exceptional color consistency over the rated lifetime. Premium color rendition with a CRI of 95 and TM-30-15 up to $R_f = 91 / R_g = 100$ ensuring a remarkable light quality. Consistent light intensity all along the strip length is obtained thanks to active current regulation operated by dedicated integrated circuits (ICs) on each step. Protected against electrostatic discharge $\pm 2,000$ V and polarity miswiring. Fully PWM dimmable for frequency > 0 Hz up to 2 kHz (flicker free for frequency higher than 1.2 kHz according to IEEE P1789 standard). Engineered and produced in Germany.

Order code

Your order code	VarioLED Flex HYDRA	HD__	W__	__	____	IP67
Order code example	VarioLED Flex HYDRA	HD6	W9	27	1144	IP67

Variant

HD6	HD6
HD10	HD10
HD15	HD15

Color rendering

> 80	8
> 90 (only HD6/HD10)	9

Final CCT delivered for finished fixture	Color temperature LED tape used	
2,500 K	2,000 K	20
2,900 K	2,200 K	22
3,300 K	2,500 K	25
3,800 K 3,600 K	2,700 K	27
4,300 K 4,300 K	3,000 K	30
5,100 K 4,900 K	3,500 K	35
6,100 K 6,600 K	4,000 K	40
9,600 K	5,000 K	50

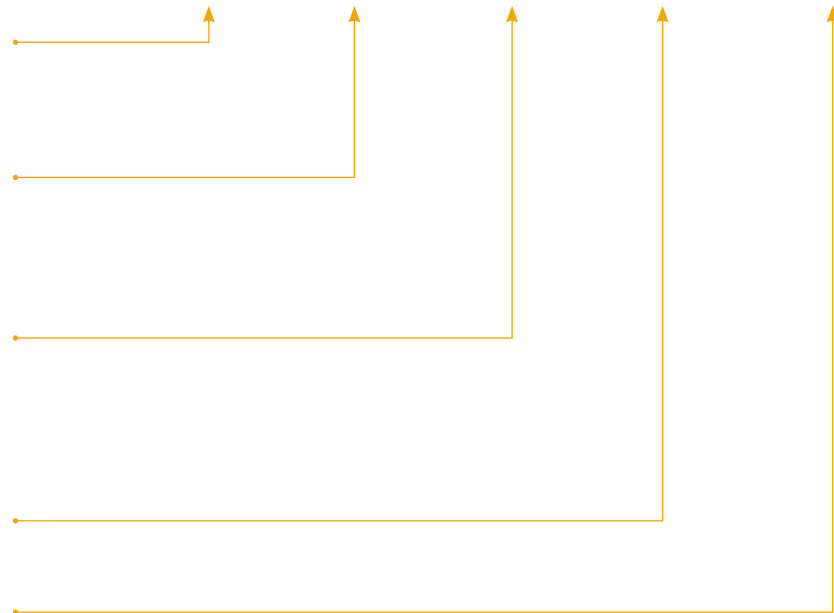
Length*

L_{min} : 82 mm (3.23");
 L_{max} : 5,019 mm (16.47"); HD15: 4,019 mm (13.19");
 in 62.5 mm (2.46") increments

Ingress protection

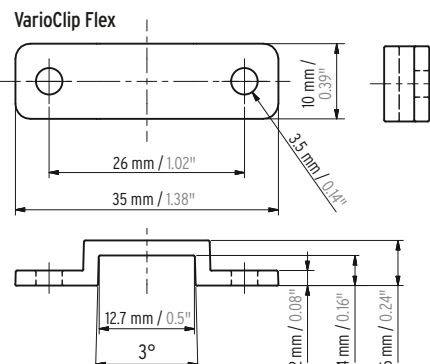
IP67	IP67
------------	------

*max. lengths product ship with male connector only



Please choose your accessories

Mounting	Art.-#
<input type="checkbox"/> VarioClip Flex 12.7 mm / 0.5" Clear (Set of 50)	13000115
<input type="checkbox"/> 3M Adhesive tape	182000035
Lead connector from driver	Art.-#
<input type="checkbox"/> VarioCon Female Mini 2 x 0.34 mm ² , 2 m / 6.56' IP67	15000142
<input type="checkbox"/> VarioCon Extension Mini 2 x 0.34 mm ² , 2 m / 6.56' IP67	15000144
<input type="checkbox"/> VarioCon Female Mini Protection Cap Mono IP67	15000218
Recommended power supply	Art.-#
<input type="checkbox"/> Power Supply Unit IP67	16000153



Recommended control unit	Art.-#
<input type="checkbox"/> Control System White/IQ-White	16000268-DT6