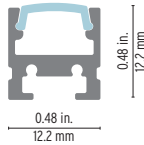
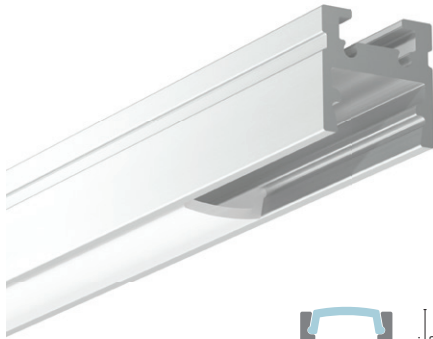


VarioContour 4400 Aluminum Profile



One of the smallest on the market, guaranteed to be discreet. The 4400 profile is reduced to a minimum with its size of less than half an inch, while accepting a good range of LED strips up to 3.1 W/ft.

Features

- Delivered in standard 6.5 ft (2m) length.
- Available as factory assembled complete fixture. See page 2 for details.
- Ultra-compact aluminum profile – 12.2mm wide by 12.2mm high (0.5 x 0.5in).
- Designed to meet North American woodworking standards.
- Made of ALCOA 6063-T5 aluminum alloy increasing heat dissipation.
- Its use increases the lifetime of your LED strip.
- Compatible with multiple installation accessories.

Project name	
Fixture type	Phase
Specifier	Date



Linear weight:
0.108 lbs/ft (without optic)

Cable Feed: End (E)
Max 3.1 W/ft

Order Code - Component

Family	Profile	Optic	Endcaps	Brackets	Accessories
VarioContour	4024				
		 4000 Clear 4032 4000 Diffuse 4034 4000 Opal 4030	 4400 Square Endcap 4052 WITHOUT HOLE 4053 WITH HOLE	 4400 Flat bracket 4064	 Type A straight joiner 4037 Type A horiz. 45°/135° joiner 4036 Type A horiz. 90° joiner 4038

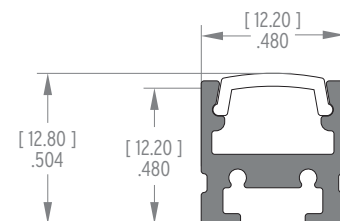
Technical Details

Optics

CLEAR	DIFFUSE	OPAL
96.5% efficiency	85% efficiency	50% efficiency
120°	120°	120°
Diffusion 20% CCT decrease 65 K	Diffusion 80% CCT decrease 130 K	Diffusion 100% CCT decrease 215 K

Assembly Dimensions [mm]

WITH STANDARD OPTIC



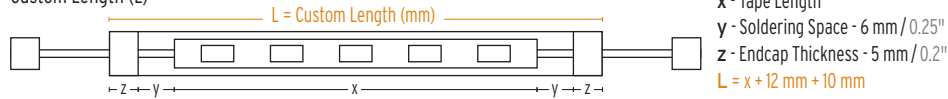
Order Code - Factory Assembled Fixture

Family	LED Tape Order Code	Profile Component Order Code ^A	Cable/Connector	Cable Position ^B	Custom Length (mm)	Ingress
VarioLED						IP20
	Refer to Luminaris Spec Sheets	Refer to Profile Spec Sheet (Page 1)	A - Female and Male IP20 Connector (4 in) B - Male IP20 Connector on one side (4 in) C - Open end cable lead on both sides (2 ft) D - Open end lead on one side (2 ft)	E - Cables from end of fixture	Refer to Custom Tape Length Chart Below (insert L)	

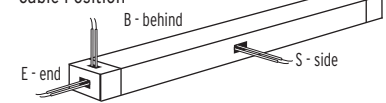
Example

VarioLED	Luminaris HD15 W830	1200 1269 1280	A	B	1969	IP20
----------	---------------------	----------------	---	---	------	------

Custom Length (L)



Cable Position



Tape Length (x) Chart^{C,D}

	Min. Tape Length	Max. Tape Length	Tape Increment
Luminaris LD	70 mm / 2.76"	1970 mm / 77.56"	70 mm / 2.76"
Luminaris HD	70 mm / 2.76"	1970 mm / 77.56"	70 mm / 2.76"

^A Do not need to specify endcaps. Factory assembled fixtures come with endcaps to match the selected optic, cable and connector configurations.

^B Some cable positions may not be available for certain models. See profile spec sheets for details.

^C Maximum fixture length is 6.5 ft (2m) for all models.

^D For custom fixture length, add 5 mm / 0.2" for each endcap thickness and 6 mm / 0.25" for soldering space.