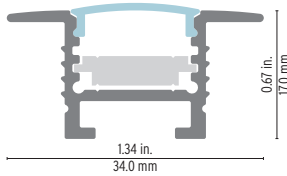


VarioContour 1500 Aluminum Profile



The design of the 1500 profile harmonizes with your décor and allows for a very secure recessed installation. It also permits adjusting the beam and provides comfortable lighting.

Features

- Delivered in standard 6.5 ft (2m) length.
- Available as factory assembled complete fixture. See page 4 for details.
- The support rail offers the largest range of installation and assembly.
- Designed to meet North American woodworking standards.
- Made of ALCOA 6063-T5 aluminum alloy increasing heat dissipation.
- Its use increases the lifetime of your LED strip.
- Compatible with multiple installation accessories.

Project name

Fixture type

Specifier

Phase

Date



Linear weight:
0.192 lbs/ft (without optic)

Cable Feed: Behind (B)
Max 4.7 W/ft

Order Code - Component (2 pages)

Family	Profile	Optic	Endcaps	Mounting	Accessories
VarioContour	1500				

See next page →

VarioContour 1500 Aluminum Profile

Family	Profile	Optic	Endcaps	Mounting	Accessories
VarioContour	1500	-	-	-	-



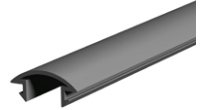
Type B single chann. susp. kit with 15ft. aircraft cable
1312 ALU



Type B vert. 45°/135° joiner
1330



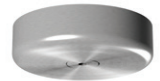
Wall support bracket, Silver
1318



Type B wire cover
8099



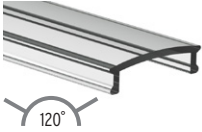
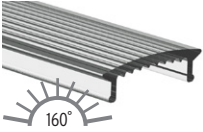
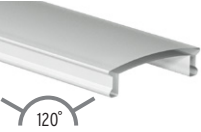
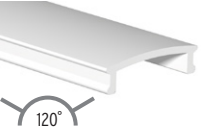
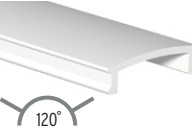
Spring bracket, Alu
1570



1.5" stainless steel canopy kit for coax. wire (suspended)
4075

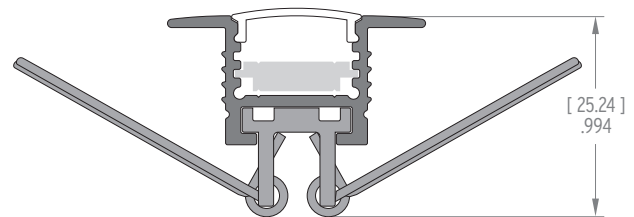
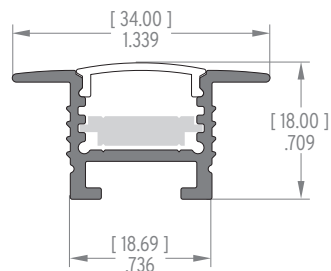
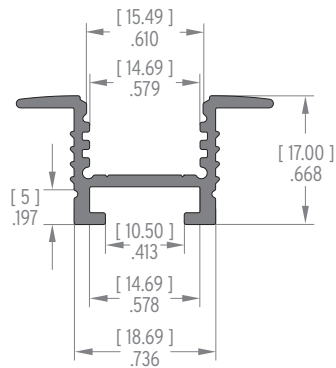
Technical Details

Optics

CLEAR	SPREAD	DIFFUSE	OPAL	PRIME
96.5% efficiency	95% efficiency	85% efficiency	50% efficiency	73% efficiency
				
Diffusion 20% CCT decrease 65 K	Diffusion 30% CCT decrease 65 K	Diffusion 80% CCT decrease 130 K	Diffusion 100% CCT decrease 215 K	Diffusion 92% CCT decrease 30 K

Assembly Dimensions [mm] in

WITH STANDARD OPTIC



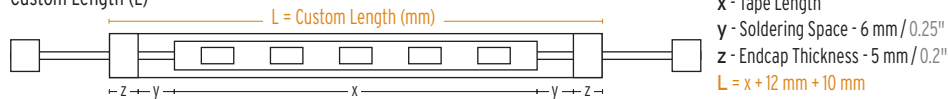
Order Code - Factory Assembled Fixture

Family	LED Tape Order Code	Profile Component Order Code ^A	Cable/Connector	Cable Position ^B	Custom Length (mm)	Ingress
VarioLED	Refer to LED Tape Spec Sheet	Refer to Profile Spec Sheet (Page 1)	A - Female and Male IP20 Connector (4 in) B - Male IP20 Connector on one side (4 in) C - Open end cable lead on both sides (2 ft) D - Open end lead on one side (2 ft)	B - Cables from behind fixture	Refer to Custom Tape Length Chart Below (insert L)	IP20

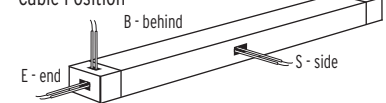
Example

VarioLED	Hydra HD15 W830	1200 1269 1280	A	B	1969	IP20
----------	-----------------	----------------	---	---	------	------

Custom Length (L)



Cable Position



Tape Length (x) Chart ^{C,D}	Min. Tape Length	Max. Tape Length	Tape Increment
Luminaris LD	70 mm / 2.76"	1970 mm / 77.56"	70 mm / 2.76"
Luminaris HD	70 mm / 2.76"	1970 mm / 77.56"	70 mm / 2.76"
Hydra LD	125 mm / 4.92"	1885 mm / 74.21"	125 mm / 4.92"
Hydra HD	62.5 mm / 2.46"	1947 mm / 76.67"	62.5 mm / 2.46"
Hydra LD Tunable White	125 mm / 4.92"	1885 mm / 74.21"	125 mm / 4.92"
Hydra LD RGB	125 mm / 4.92"	1885 mm / 74.21"	125 mm / 4.92"
Hydra HD RGB	62.5 mm / 2.46"	1947 mm / 76.67"	62.5 mm / 2.46"

^A Do not need to specify endcaps. Factory assembled fixtures come with endcaps to match the selected optic, cable and connector configurations.

^B Some cable positions may not be available for certain models. See profile spec sheets for details.

^C Maximum fixture length is 6.5 ft (2m) for all models.

^D For custom fixture length, add 5 mm / 0.2" for each endcap thickness and 6 mm / 0.25" for soldering space.