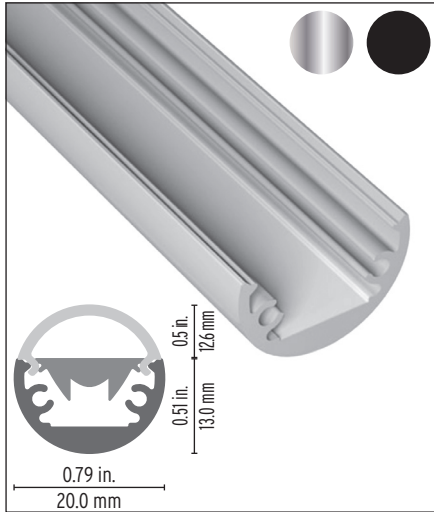


Contour 0024 Aluminum Profile



Round Profile designed for a variety of linear LED lighting needs. Different mounting options offer great flexibility for your linear application. The channel provide heat sink for medium/high power LED tapes where smaller installation heights are required. High light extraction efficacy and superior light quality. Black or Silver finish.

Features

- Delivered in standard 6.5 ft (2m) length.
- Designed to give a uniform light without hot spots.
- Its use increases the lifetime of your LED strip.
- Compatible with multiple installation accessories including pendant and surface mounting brackets.
- Various linear lens options for different lighting requirements.

Project name

Fixture type

Specifier

Phase

Date



Cable Feed: Behind (B)
Max 8.5 W/ft

Component Order Code

Family	Profile	Optic	Endcaps	Mounting
Contour				



Profile
10000511, Silver
10000511-SCH, Black



Round
Opal 12000011
Semi-Opal 12000014
Clear 12000017



Round, Aluminum (Set of 2)
11000177, Silver
11000165-SCH, Black



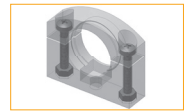
Surface Mounting Clip
13000160, Silver
13000160-SCH, Black



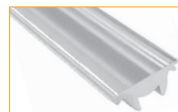
Low
Opal 12000013
Semi-Opal 12000016
Clear 12000019



Endcap, Aluminum (Set of 2)
11000178, Silver
11000166-SCH, Black



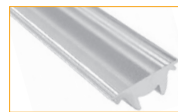
Vertical Mounting Clip
2 Piece
13000162, Black



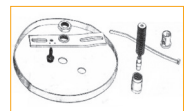
Linear Flat Lens, 10°
12000042



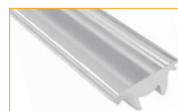
Pendant Mounting Kit
13000161, Silver
13000161-SCH, Black
6.5 ft cable length,
recommended spacing
is 3.25 ft.



Linear Flat Lens, 30°
12000043



Pendant Canopy Kit
CANOPYKIT4, White
5 in diameter. Order with
Pendant Mounting Kit for
live electrical feeds.

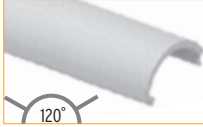


Linear Flat Lens, 60°
12000044

Technical Details

ROUND OPAL

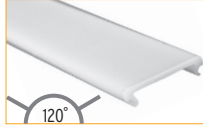
55% light efficiency



Dot free
5% warmer CCT offset
This lens provides a homogenous line of light with HD tapes.

LOW OPAL

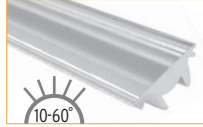
50% light efficiency



Dot free
5% warmer CCT offset
This lens provides a homogenous line of light with HD tapes.

LINEAR FLAT LENS

80% light efficiency



Visible Dotting
2% warmer CCT offset
A converging lens that shapes the beam spread for targeted and focused lighting.

Clear and Semi-Opal are 95% and 80% efficient respectively. They exhibit visible dotting effect.

Mounting Dimensions

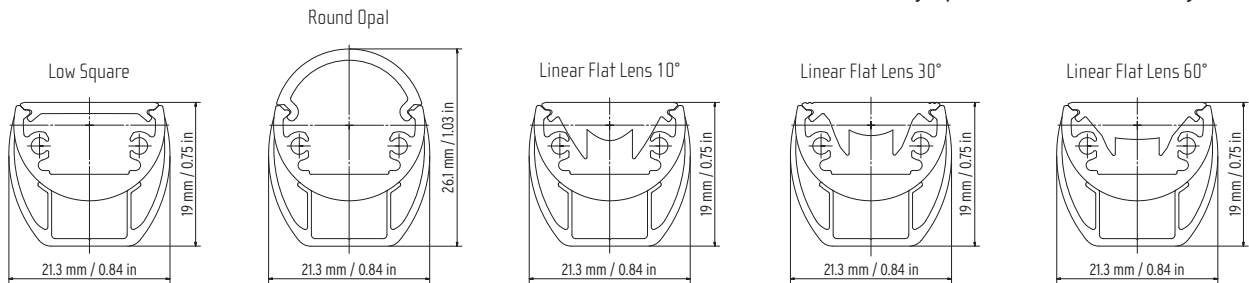
Fixture with Surface Mounting Clip / Pendant Mounting Kit



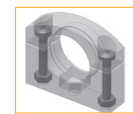
Surface Mounting Clip



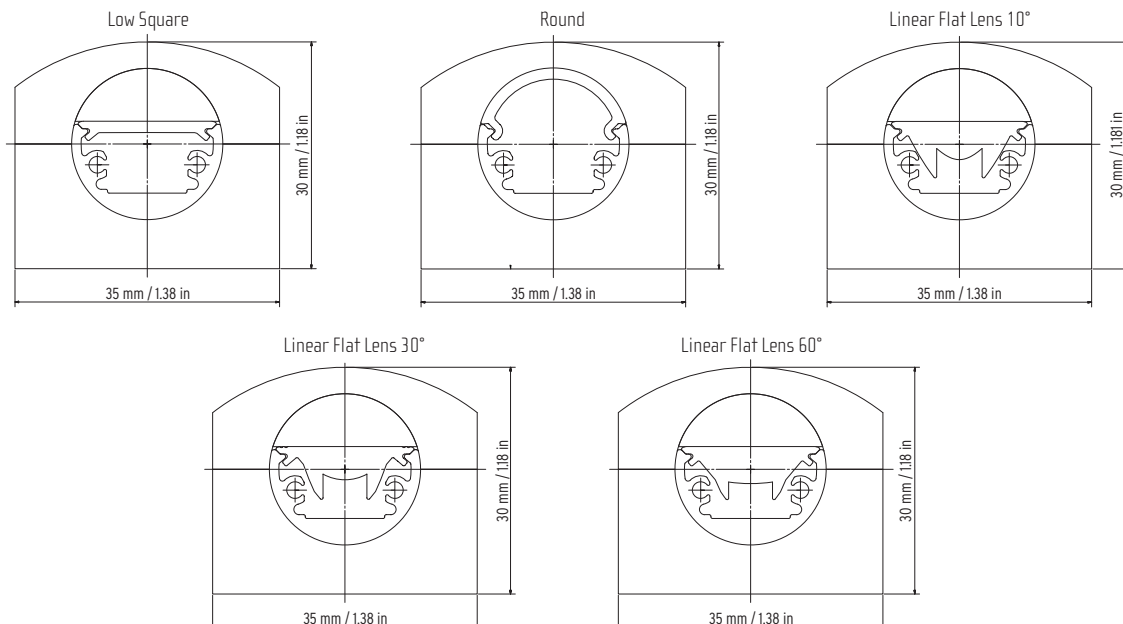
Pendant Mounting Kit



Fixture with Vertical Mounting Clip



Vertical Mounting Clip



LED FLEX TAPE COMPATIBILITY CHART

✓ Compatible

⊙ Dot free

LED Tape Family	LED Tape Type	Models ¹	LED Tape Step Length	Contour 0024 Compatibility
LUMINARIS	Static White	Luminaris LD05 (1.7W/ft, 152lm/ft)	2.76"/70mm	✓
		Luminaris LD10 (2.6W/ft, 311lm/ft)	2.76"/70mm	✓
		Luminaris LD15 (4.7W/ft, 463lm/ft)	2.76"/70mm	✓
		Luminaris LD22 (6.3W/ft, 659lm/ft)	2.76"/70mm	✓
		Luminaris HD05 (1.6W/ft, 201lm/ft)	2.76"/70mm	⊙
		Luminaris HD10 (2.6W/ft, 320lm/ft)	2.76"/70mm	⊙
		Luminaris HD15 (4.7W/ft, 552lm/ft)	2.76"/70mm	⊙
		Luminaris HD22 (6.3W/ft, 716lm/ft)	2.76"/70mm	⊙
HYDRA	Static White	Hydra PRO 07 (1.9W/ft, 185lm/ft)	2.46"/62.5mm	⊙
		Hydra PRO 13 (3.9W/ft, 430lm/ft)	2.46"/62.5mm	⊙
		Hydra PRO 18 (5.6W/ft, 600lm/ft)	2.46"/62.5mm	⊙
		Hydra PRO 24 (7.4W/ft, 750lm/ft)	2.46"/62.5mm	⊙
		Hydra PRO 35 (10.7W/ft, 1100lm/ft)	2.46"/62.5mm	
	Tunable White	Hydra Tunable LD25 (7.6W/ft, 503lm/ft)	4.92"/125mm	✓
		Hydra Tunable HD12 (3.6W/ft, 213lm/ft)	2.46"/62.5mm	⊙
		Hydra Tunable HD24 (7.2W/ft, 472lm/ft)	2.46"/62.5mm	⊙
	RGB	Hydra RGB LD15 (4.6W/ft, 127lm/ft)	4.92"/125mm	✓
		Hydra RGB HD10 (3.4W/ft, 102lm/ft)	2.46"/62.5mm	⊙
		Hydra RGB HD20 (6.7W/ft, 191lm/ft)	2.46"/62.5mm	⊙
STATIC COLOR	Static Color	Static Color HD (3.1W/ft, 300lm/ft)	2.76"/70mm	⊙

1) Lumen values reflect measurements of LED tape at 3000K. Tunable White, RGB and Static Color represent the highest possible lumen output.

Click for more information

LED FLEX TAPE

PROFILES & OPTICS

DRIVERS & CONTROLLERS