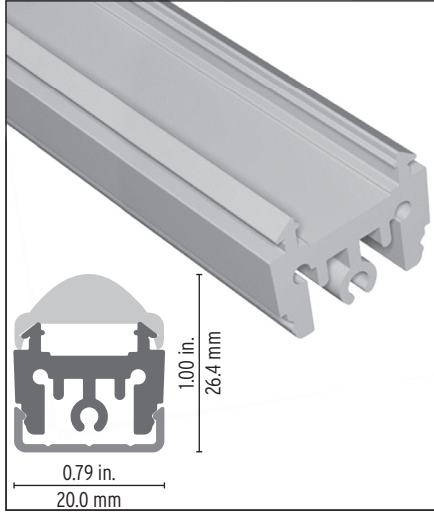


# Contour 0016 Aluminum Profile

# LED LINEAR™



Designed for a variety of linear LED lighting needs. Different mounting options offer great flexibility for your linear application. The channel provide heat sink for high power LED tapes where smaller installation heights are required. High light extraction efficacy and superior light quality.

### Features

- Delivered in standard 6.5 ft (2m) length.
- Designed to give a uniform light without hot spots.
- Its use increases the lifetime of your LED strip.
- Compatible with multiple installation accessories.
- Various linear lens options for different lighting requirements.

Project name \_\_\_\_\_

Fixture type \_\_\_\_\_ Phase \_\_\_\_\_

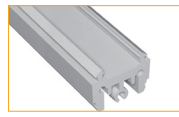
Specifier \_\_\_\_\_ Date \_\_\_\_\_



Cable Feed: End (E)  
Max 12.2 W/ft

## Component Order Code

Family	Profile	Optic	Endcaps	Mounting
Contour	10000513			



Profile, Silver  
10000513



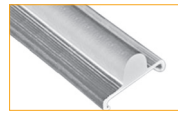
Round  
Opal 12000004  
Semi-Opal 12000003  
Clear 12000002



No hole, Aluminum (1 piece)  
11000168



Flat Mounting Profile, 6.5ft.  
10000039



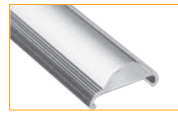
Linear Dome Lens, 15°  
12000049



With hole, Aluminum (1 piece)  
11000170



Flat Mounting Clip, 4in.  
10000040

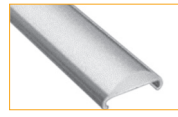


Linear Dome Lens, 30°  
12000029

15° Mounting Clip, 4in.  
10000040-15d

30° Mounting Clip, 4in.  
10000040-30d

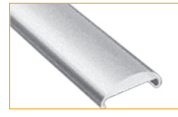
45° Mounting Clip, 4in.  
10000040-45d



Linear Dome Lens, 60°  
12000031



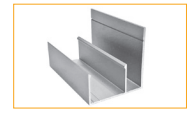
Plastic Mounting Clip  
13000032



Linear Dome Lens, 90°  
12000032



Adjustable Mounting Clip  
13000082



Wall Mounting Profile 6.5 ft  
13000319-2m

## Technical Details

### ROUND OPAL

55% light efficiency



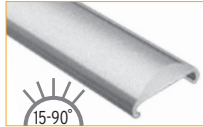
#### Dot free

5% warmer CCT offset

This lens provides a homogenous line of light with HD tapes.

### LINEAR DOME LENS

80% light efficiency



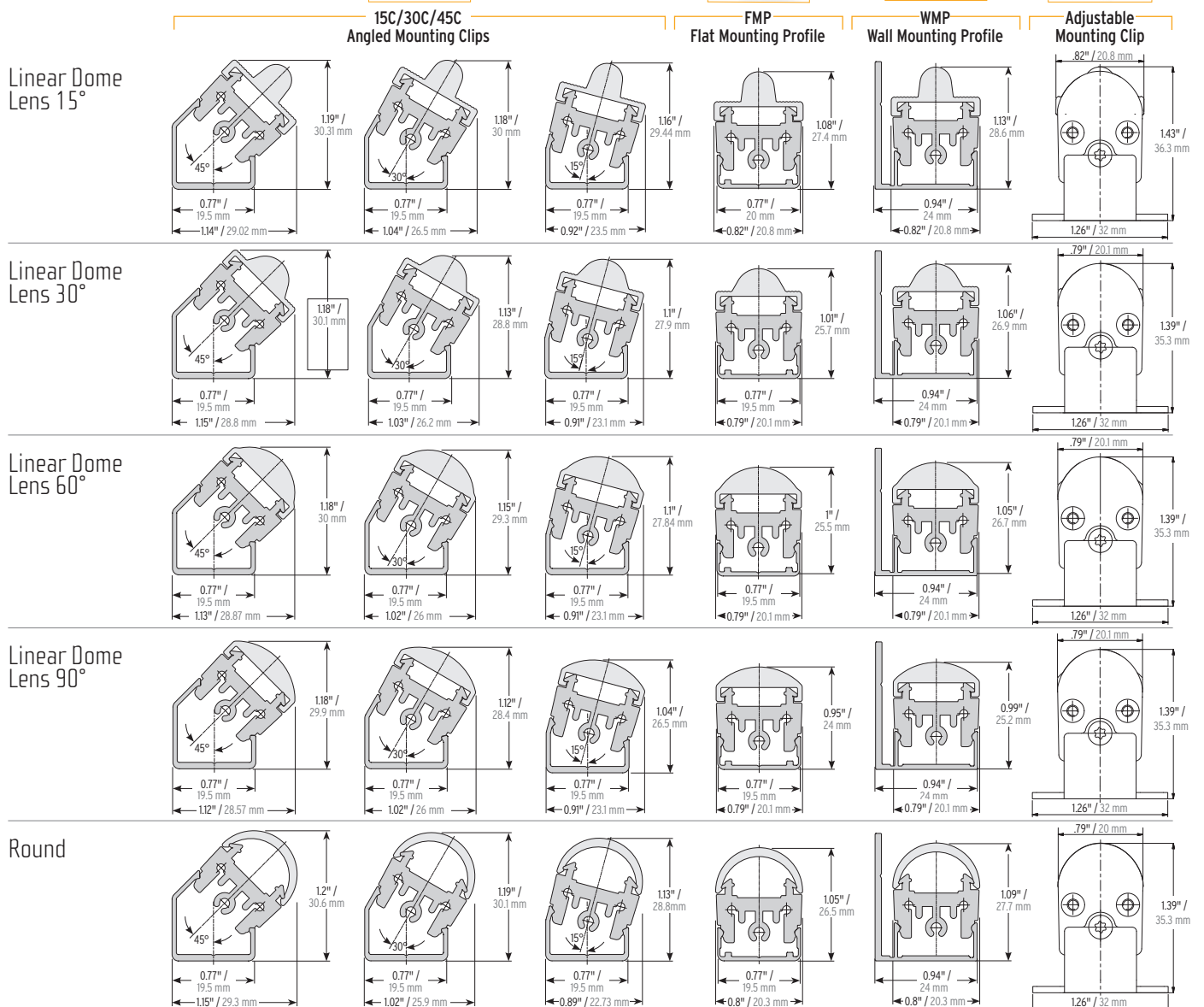
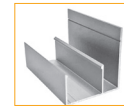
#### Visible Dotting

2% warmer CCT offset

A converging lens that shapes the beam spread for targeted and focused lighting.

Clear and Semi-Opal are 95% and 80% efficient respectively. They exhibit visible dotting effect.

## Mounting Dimensions



## LED FLEX TAPE COMPATIBILITY CHART

✓ Compatible

⊙ Dot free

LED Tape Family	LED Tape Type	Models <sup>1</sup>	LED Tape Step Length	Contour 0016 Compatibility
LUMINARIS	Static White	Luminaris LD05 (1.7W/ft, 152lm/ft)	2.76"/70mm	✓
		Luminaris LD10 (2.6W/ft, 311lm/ft)	2.76"/70mm	✓
		Luminaris LD15 (4.7W/ft, 463lm/ft)	2.76"/70mm	✓
		Luminaris LD22 (6.3W/ft, 659lm/ft)	2.76"/70mm	✓
		Luminaris HD05 (1.6W/ft, 201lm/ft)	2.76"/70mm	⊙
		Luminaris HD10 (2.6W/ft, 320lm/ft)	2.76"/70mm	⊙
		Luminaris HD15 (4.7W/ft, 552lm/ft)	2.76"/70mm	⊙
		Luminaris HD22 (6.3W/ft, 716lm/ft)	2.76"/70mm	⊙
HYDRA	Static White	Hydra PRO 07 (1.9W/ft, 185lm/ft)	2.46"/62.5mm	⊙
		Hydra PRO 13 (3.9W/ft, 430lm/ft)	2.46"/62.5mm	⊙
		Hydra PRO 18 (5.6W/ft, 600lm/ft)	2.46"/62.5mm	⊙
		Hydra PRO 24 (7.4W/ft, 750lm/ft)	2.46"/62.5mm	⊙
		Hydra PRO 35 (10.7W/ft, 1100lm/ft)	2.46"/62.5mm	⊙
	Tunable White	Hydra Tunable LD25 (7.6W/ft, 503lm/ft)	4.92"/125mm	✓
		Hydra Tunable HD12 (3.6W/ft, 213lm/ft)	2.46"/62.5mm	⊙
		Hydra Tunable HD24 (7.2W/ft, 472lm/ft)	2.46"/62.5mm	⊙
	RGB	Hydra RGB LD15 (4.6W/ft, 127lm/ft)	4.92"/125mm	✓
		Hydra RGB HD10 (3.4W/ft, 102lm/ft)	2.46"/62.5mm	⊙
Hydra RGB HD20 (6.7W/ft, 191lm/ft)		2.46"/62.5mm	⊙	
STATIC COLOR	Static Color	Static Color HD (3.1W/ft, 300lm/ft)	2.76"/70mm	⊙

1) Lumen values reflect measurements of LED tape at 3000K. Tunable White, RGB and Static Color represent the highest possible lumen output.

Click for more information

LED FLEX TAPE

PROFILES & OPTICS

DRIVERS & CONTROLLERS