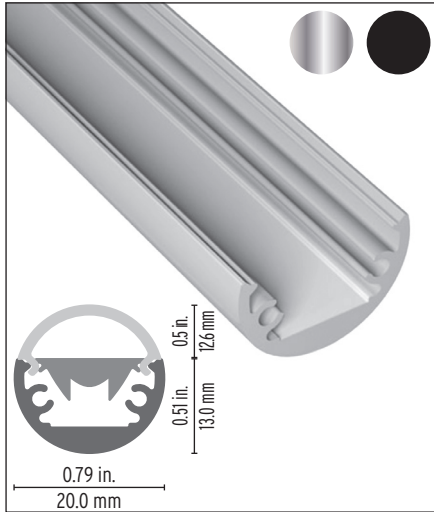


Contour 0024 Aluminum Profile



Round Profile designed for a variety of linear LED lighting needs. Different mounting options offer great flexibility for your linear application. The channel provide heat sink for medium/high power LED tapes where smaller installation heights are required. High light extraction efficacy and superior light quality.

Features

- Delivered in standard 6.5 ft (2m) length.
- Designed to give a uniform light without hot spots.
- Its use increases the lifetime of your LED strip.
- Compatible with multiple installation accessories including pendant and surface mounting brackets.
- Various linear lens options for different lighting requirements.

Project name _____

Fixture type _____ Phase _____

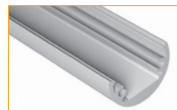
Specifier _____ Date _____



Cable Feed: Behind (B)
Max 7.6 W/ft

Component Order Code

Family	Profile	Optic*	Endcaps	Mounting
Contour				



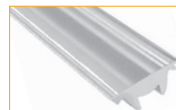
Profile
10000511, Silver
10000511-SCH, Black



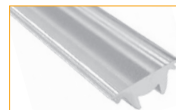
Round, Opal
12000011



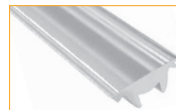
Low, Opal
12000013



Linear Flat Lens, 10°
12000042



Linear Flat Lens, 30°
12000043



Linear Flat Lens, 60°
12000044



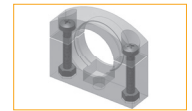
Round, Aluminum (Set of 2)
11000177, Silver
11000165-SCH, Black



Endcap, Aluminum (Set of 2)
11000178, Silver
11000166-SCH, Black



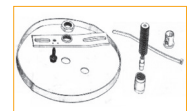
Surface Mounting Clip
13000160, Silver
13000160-SCH, Black



Vertical Mounting Clip
2 Piece
13000162, Black



Pendant Mounting Kit
13000161, Silver
13000161-SCH, Black
6.5 ft cable length,
recommended spacing
is 3.25 ft.



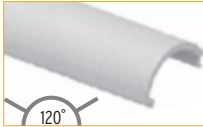
Pendant Canopy Kit
CANOPYKIT4, White
5 in diameter. Order with
Pendant Mounting Kit for
live electrical feeds.

*Clear and Semi-Opal Lenses are available. Consult factory for details.

Technical Details

ROUND OPAL

55% light efficiency



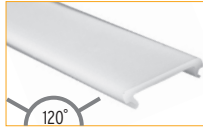
Dot free

5% warmer CCT offset

This lens provides a homogenous line of light.

LOW OPAL

50% light efficiency



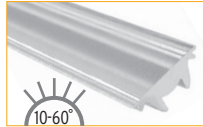
Dot free

5% warmer CCT offset

This lens provides a homogenous line of light.

LINEAR FLAT LENS

80% light efficiency



Visible Dotting

2% warmer CCT offset

A converging lens that shapes the beam spread for targeted and focused lighting.

Clear and Semi-Opal are 95% and 80% efficient respectively. They exhibit visible dotting effect.

Mounting Dimensions

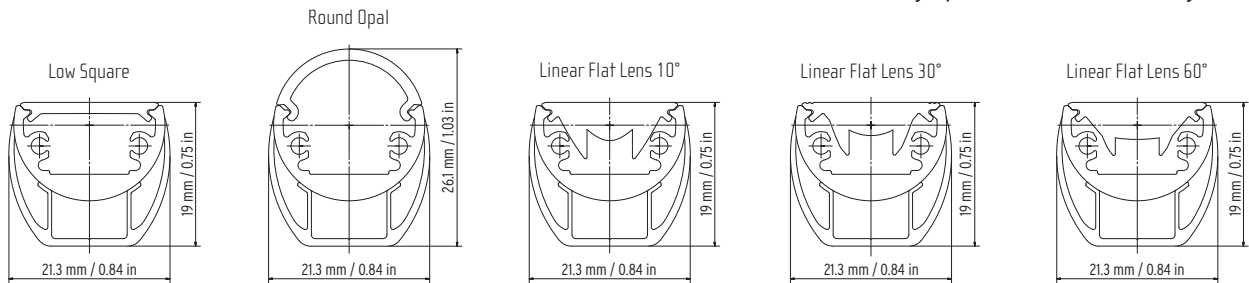
Fixture with Surface Mounting Clip / Pendant Mounting Kit



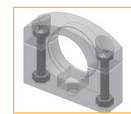
Surface Mounting Clip



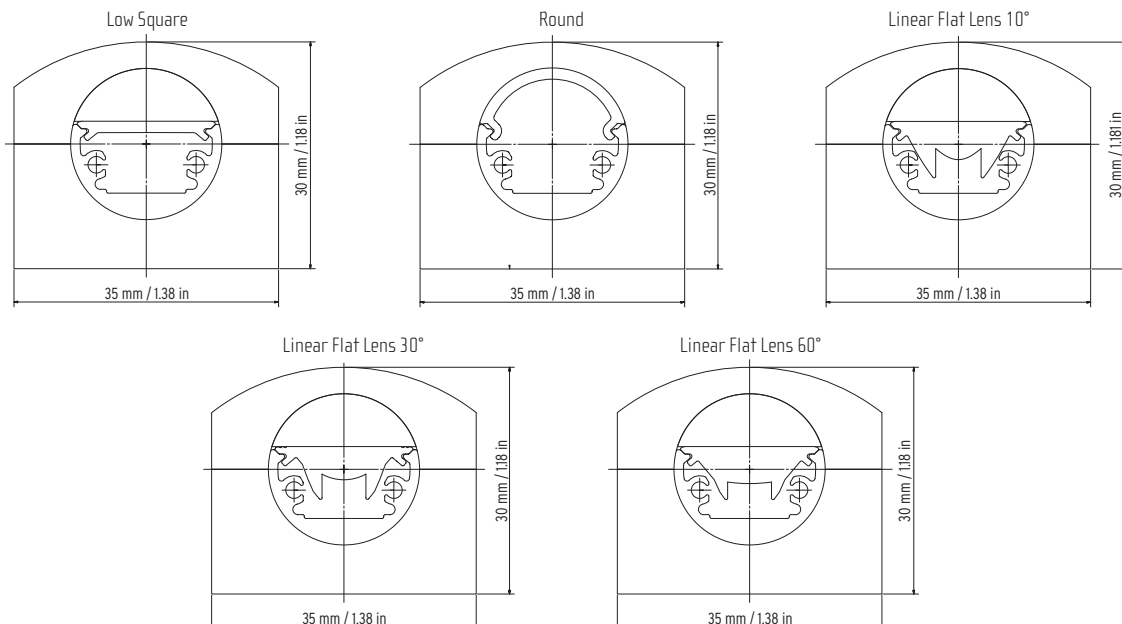
Pendant Mounting Kit



Fixture with Vertical Mounting Clip



Vertical Mounting Clip



LED FLEX TAPE COMPATIBILITY CHART

✓ Compatible

⊙ Dot free with Opal/Prime Lenses

LED Tape Family	LED Tape Type	Models ¹	LED Tape Step Length	Contour 0024 Compatibility
LUMINARIS	Static White	Luminaris LD05 (1.7w/ft, 152lm/ft)	2.76"/70mm	✓
		Luminaris LD10 (2.6w/ft, 311lm/ft)	2.76"/70mm	✓
		Luminaris LD15 (4.7w/ft, 463lm/ft)	2.76"/70mm	✓
		Luminaris LD22 (6.3w/ft, 659lm/ft)	2.76"/70mm	✓
		Luminaris HD05 (1.6w/ft, 201lm/ft)	2.76"/70mm	⊙
		Luminaris HD10 (2.6w/ft, 320lm/ft)	2.76"/70mm	⊙
		Luminaris HD15 (4.7w/ft, 552lm/ft)	2.76"/70mm	⊙
		Luminaris HD22 (6.3w/ft, 716lm/ft)	2.76"/70mm	⊙
HYDRA	Static White	Hydra LD05 (1.5w/ft, 145lm/ft)	4.92"/125mm	✓
		Hydra LD10 (3.1w/ft, 359lm/ft)	4.92"/125mm	✓
		Hydra LD15 (4.6w/ft, 575lm/ft)	4.92"/125mm	✓
		Hydra LD25 (7.6w/ft, 935lm/ft)	4.92"/125mm	✓
		Hydra LD40 (12w/ft, 1212lm/ft)	4.92"/125mm	✓
		Hydra HD06 (1.8w/ft, 173lm/ft)	2.46"/62.5mm	⊙
		Hydra HD10 (3.1w/ft, 289lm/ft)	2.46"/62.5mm	⊙
		Hydra HD15 (4.6w/ft, 575lm/ft)	2.46"/62.5mm	⊙
		Hydra HD25 (7.6w/ft, 935lm/ft)	2.46"/62.5mm	⊙
		Hydra HD36 (11w/ft, 1365lm/ft)	2.46"/62.5mm	⊙
	Tunable White	Hydra Tunable LD25 (7.6w/ft, 503lm/ft)	4.92"/125mm	✓
	RGB	Hydra RGB LD15 (4.6w/ft, 127lm/ft)	4.92"/125mm	✓
		Hydra RGB HD10 (3.4w/ft, 102lm/ft)	2.46"/62.5mm	⊙
Hydra RGB HD20 (6.7w/ft, 191lm/ft)		2.46"/62.5mm	⊙	
NEXUS	Static White	Nexus HD06 (1.8w/ft, 160lm/ft)	2.46"/62.5mm	⊙
		Nexus HD10 (2.9w/ft, 260lm/ft)	2.46"/62.5mm	⊙
		Nexus HD15 (4.7w/ft, 420lm/ft)	2.46"/62.5mm	⊙
		Nexus HD25 (7.6w/ft, 690lm/ft)	2.46"/62.5mm	⊙
		Nexus HD40 (12.2w/ft, 1120lm/ft)	2.46"/62.5mm	⊙
		Nexus UHD15 (4.6w/ft, 410lm/ft)	1.64"/41.7mm	⊙
		Nexus UHD25 (7.6w/ft, 680lm/ft)	1.64"/41.7mm	⊙
	Tunable White	Nexus Tunable HD12 (3.9w/ft, 190lm/ft)	2.46"/62.5mm	⊙
		Nexus Tunable HD24 (7.3w/ft, 410lm/ft)	2.46"/62.5mm	⊙
		Nexus Tunable HD42 (12.8w/ft, 770lm/ft)	2.46"/62.5mm	⊙
SOL	Static White	Sol LD15 (4.7w/ft, 480lm/ft)	4.92"/125mm	✓
		Sol LD25 (7.6w/ft, 780lm/ft)	4.92"/125mm	✓
		Sol HD15 (4.7w/ft, 480lm/ft)	2.46"/62.5mm	⊙
		Sol HD25 (7.6w/ft, 780lm/ft)	2.46"/62.5mm	⊙
		Sol HD36 (11w/ft, 1160lm/ft)	2.46"/62.5mm	⊙
	Tunable White	Sol Tunable LD20 (6w/ft, 410lm/ft)	9.84"/250mm	✓
STATIC COLOR	Static Color	Static Color HD (3.1w/ft, 300lm/ft)	2.76"/70mm	⊙

1) Lumen values reflect measurements of LED tape at 3000K. Tunable White, RGB and Static Color represent the highest possible lumen output.