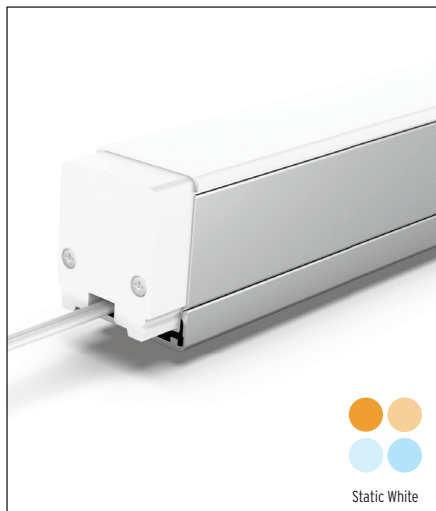


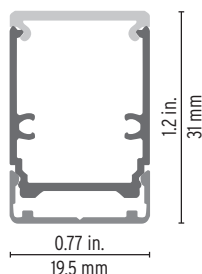
SurfaceMount Deep - Assembled Fixture



Fixture is designed to ensure that the LED source is invisible, offering uniform and soft lighting for the eyes. Compact and versatile design. High light extraction efficacy and superior light quality.

Features

- Designed to give a uniform light without hot spots.
- Compatible with multiple installation accessories.



Project name _____

Fixture type _____ Phase _____

Specifier _____ Date _____



Cable Feed: End (E)
Max 4.7 W/ft

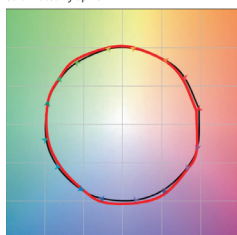
Order Code

Family	LED Tape	CRI	CCT	Profile	Optic	Cable / Connector	Cable Position	Mounting ³	Fixture length (mm)	Ingress
VarioLED	-----	W_	__	0022	__	---	---	----	-----	IP20
	Nexus HD6-1.8 w/ft, 155 lm/ft	W8 85CRI	22 2200K ²	0022	LO Low Opal	FM Female & Male (4")	E End	FMP Flat Mounting Profile 6.5'	Refer to length chart on page 3	IP20
	Nexus HD10-2.9 w/ft, 250 lm/ft	W9 95CRI	27 2700K		LS Low Semi-Opal	MS Male one side only (4")	FMC Flat Mounting Clip			
	Nexus HD15-4.7 w/ft, 400 lm/ft		30 3000K		LC Low Clear	OB Open Cable both sides (6')	15C 15° Mounting Clip			
			35 3500K			OS Open Cable one side only (6')	30C 30° Mounting Clip			
			40 4000K				45C 45° Mounting Clip			
			50 5000K ²				PMC Plastic Mounting Clip			
							WMP Wall Mounting Profile 6.5'			

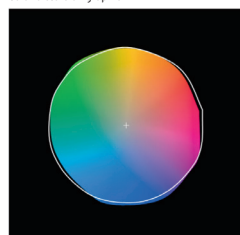
¹ Lumen Values @3000K with Clear Optic ² Available only in 85CRI. ³ See Components spec sheet for details.

LED Tape Specifications

Color vector graphic



Color distortion graphic



- R_f 92
- R_g 101
- CRI 95
- R₉ 85

- 2200
- 2700
- 3000
- 3500
- 4000
- 5000 Kelvin

HD - High density / 8.93 mm LED pitch



L90/B10
> 60,000 h

Wxxx/
339

— Reference illuminant — Test source @ 3000K

		HD6		HD10		HD15		Power (W/ft) ⁸	HD6	HD10	HD15
		CCT	Lumen/ft ⁴	W/ft ⁸	Lumen/ft ⁴	W/ft ⁸	Lumen/ft ⁴		W/ft ⁸	HD6	HD10
Static White	● W822	2,200 K	140	1.8	240	2.9	390	4.7	1.8	2.9	4.7
	● W927	2,700 K	150	1.8	260	2.9	410	4.7	109	115	118
	● W930	3,000 K	160	1.8	260	2.9	420	4.7	95 / 75	95 / 75	95 / 75
	● W935	3,500 K	160	1.8	270	2.9	430	4.7	95 / 100	95 / 100	95 / 100
	● W940	4,000 K	160	1.8	270	2.9	440	4.7			
	● W850	5,000 K	190	1.8	340	2.9	550	4.7			
									122°F / 50°C	122°F / 50°C	113°F / 45°C

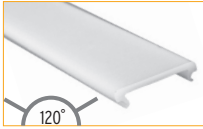
⁴ Lumen values represent bare LED tape without any optics. Refer to page 2 to calculate lumens for each optic option by using the light efficiency percentages.

⁸ The given data are typical values. Due to tolerances of the production process and the electrical components, values for light output and electrical power can vary up to 10%.

Technical Details

LOW OPAL

60% light efficiency



Dot free

5% warmer CCT offset

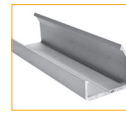
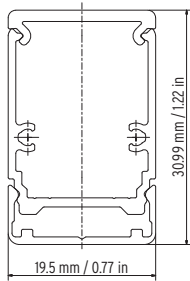
This lens provides a homogenous line of light.

Clear and Semi-Opal are 97% and 90% efficient respectively. They exhibit visible dotting effect.

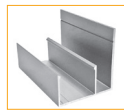
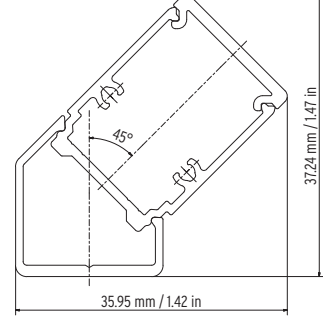
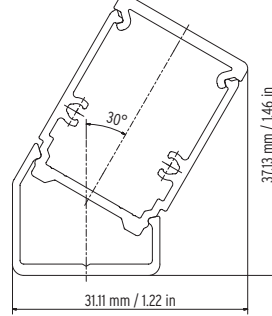
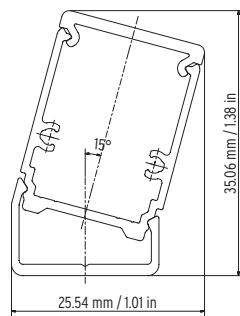
Mounting Dimensions



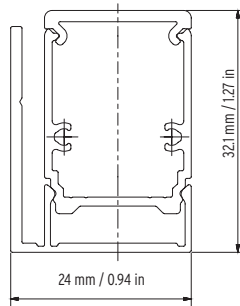
FMP/FMC
Flat Mounting
Profile/Clip



15C/30C/45C
Angled Mounting Clips



WMP
Wall Mounting Profile




LENGTH CHART

Fixture length		HD6 1.8 Watts/Ft		HD10 2.9 Watts/Ft		HD15 4.7 Watts/Ft	
inches	mm	Watts/fixture	Lumens/fixture @3000K	Watts/fixture	Lumens/fixture @3000K	Watts/fixture	Lumens/fixture @3000K
3.2	83	0.5	42	0.8	68	1.2	108
5.7	145	0.9	74	1.4	119	2.2	190
8.2	208	1.2	105	2.0	170	3.1	272
10.6	270	1.6	137	2.7	221	4.1	354
13.1	333	2.0	169	3.3	273	5.0	436
15.6	395	2.3	201	3.9	324	6.0	518
18.0	458	2.7	233	4.5	375	6.9	600
20.5	520	3.1	264	5.1	426	7.8	682
22.9	583	3.4	296	5.7	478	8.8	764
25.4	645	3.8	328	6.3	529	9.7	846
27.9	708	4.2	360	7.0	580	10.7	928
30.3	770	4.5	391	7.6	631	11.6	1010
32.8	833	4.9	423	8.2	683	12.6	1092
35.2	895	5.3	455	8.8	734	13.5	1174
37.7	958	5.7	487	9.4	785	14.4	1256
40.2	1020	6.0	519	10.0	836	15.4	1338
42.6	1083	6.4	550	10.7	888	16.3	1420
45.1	1145	6.8	582	11.3	939	17.3	1502
47.5	1208	7.1	614	11.9	990	18.2	1584
50.0	1270	7.5	646	12.5	1041	19.2	1666
52.5	1333	7.9	677	13.1	1093	20.1	1748
54.9	1395	8.2	709	13.7	1144	21.0	1830
57.4	1458	8.6	741	14.3	1195	22.0	1912
59.8	1520	9.0	773	15.0	1246	22.9	1994
62.3	1583	9.3	805	15.6	1298	23.9	2076
64.8	1645	9.7	836	16.2	1349	24.8	2158
67.2	1708	10.1	868	16.8	1400	25.8	2240
69.7	1770	10.5	900	17.4	1451	26.7	2322
72.1	1833	10.8	932	18.0	1503	27.6	2404
74.6	1895	11.2	963	18.6	1554	28.6	2486
77.1	1958	11.6	995	19.3	1605	29.5	2568

Compatible Drivers

Item	Specifications	Downloads
LED LINEAR™ Non-Dimmable Drivers 	<ul style="list-style-type: none"> • UL 8750 Listed Enclosure - With Built-In Junction Boxes • Universal Input Voltage 120V - 277V • IP65 - For Both Indoor and Outdoor Use • No Minimum Load Requirement • 24V Constant Voltage Output, Class 2 • Available in three wattages 30W, 60W and 96W • Max. Dimensions: 12-1/8" x 2-3/8" x 1-3/8" 	30 W SPEC SHEET 60 W SPEC SHEET 96 W SPEC SHEET INSTALLATION INSTRUCTIONS
LED LINEAR™ 0-10V Dimmable Drivers 	<ul style="list-style-type: none"> • UL 8750 Listed Enclosure - With Built-In Junction Boxes • 0-10V Dimmable - Flicker Free Down to 1% • Universal Input Voltage 120V - 277V • IP65 - For Both Indoor and Outdoor Use • 24V Constant Voltage Output, Class 2, Class P • Available in three wattages 30W, 60W and 96W • Max. Dimensions: 12-1/8" x 2-3/8" x 1-3/8" 	30 W SPEC SHEET 60 W SPEC SHEET 96 W SPEC SHEET INSTALLATION INSTRUCTIONS
LED LINEAR™ ELV/Triac Dimmable Drivers 	<ul style="list-style-type: none"> • UL 8750 Listed Class 2 Enclosure • 24V constant voltage output • Compact size yet high efficiency and performance in dry and damp environments (IP67) • Multiple Inputs: 120V or 277V • Fully dimmable: ELV Dimmers - Reverse or Adaptive Phase Control, Trailing Edge • Available in two wattages 48W and 96W • Multiple Circuits are available up to 4 units (up to 384W) 	48 W SPEC SHEET 96 W SPEC SHEET INSTALLATION INSTRUCTIONS
 MEAN WELL PWM Dimmable Drivers 	<ul style="list-style-type: none"> • Universal AC input / Full range (up to 305VAC) • Constant voltage PWM style output • Built-in 3 in 1 dimming function (0-10Vdc or PWM signal or resistance) • Dimming range : 0-100% • Class 2 power unit • Suitable for dry / damp / wet locations • UL Recognized component, 5 years warranty 	40 W SPEC SHEET 60 W SPEC SHEET 90 W SPEC SHEET INSTALLATION INSTRUCTIONS
 LUTRON Dimmable Drivers 	<ul style="list-style-type: none"> • UL Listed Enclosure • Dimming Range: 100% to 1% and 0.1% (Premiere) • LED lighting turns on to any dimmed level without flashing to full brightness • Operating Voltage: 120V~ to 277V~ at 50/60 Hz • Rated lifetime of 50,000 hours at 40°C (104°F) ambient temperature and maximum loading • For rated warranty, ambient temperature not to exceed 40°C (104°F) • Open-circuit protected output 	HI-LUME SPEC SHEET HI-LUME PREMIERE SPEC SHEET INSTALLATION INSTRUCTIONS
eldoLED DALI/DMX Dimmable Drivers 	<ul style="list-style-type: none"> • Available in linear or rectangular format • 100W, DMX/DALI interface for Static White, Tunable White and RGB/W Applications • 4 control channels • 24V constant voltage, 4 x 24V outputs • Metal or plastic case options 	100 W SPEC SHEET INSTALLATION INSTRUCTIONS

Controllers

Item	Specifications	Downloads
eldoLED Controllers 	180/D DMX Controller for RGB/W and Tunable White Applications	180/D SPEC SHEET
	210/D Dali Controller for Static White Applications	210/D SPEC SHEET
	211/D-LG 0-10V Logarithmic Dimming Controller	211/D-LG SPEC SHEET
	211/D-LN 0-10V Linear Dimming Controller	211/D-LN SPEC SHEET
	212/D DMX Controller for Static White and Static Color Applications	212/D SPEC SHEET
	DimWheel DMX Wall Controller for RGB/W and Tunable White Applications	DIM WHEEL SPEC SHEET

Click for more information

NEXUS HD

CONTOUR 0022

VOLTAGE DROP CALCULATOR

INSTALLATION

LED LINEAR TECHNOLOGY