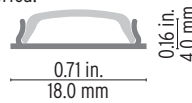




The fixture allows integrating linear LED lighting on curved or uneven surfaces. Its low profile of less than 1/32 in. (0.75 mm), allows for effortless bending and installation using plain mounting tape.

### Features

- Thin, lightweight and flexible, can be easily bent both inside and outside over curved or uneven surfaces.
- Can be installed using adhesive tape.
- Designed to meet North American woodworking standards.
- Made of ALCOA 6063-T5 aluminum alloy increasing heat dissipation.
- Max bending radius is 4 inches.
- Only available in North America.
- Cable Feed: End (E)



Project name \_\_\_\_\_

Fixture type \_\_\_\_\_ Phase \_\_\_\_\_

Specifier \_\_\_\_\_ Date \_\_\_\_\_

IC Driver  
Constant light output  
 TJ Away  
Exceptional Thermal Dissipation  
 Reel-to-Reel  
High Quality Solder Free Reels  
 One Bin Only  
3 MacAdam up to 90 CRI  
 Dot Free  
 L80/B10 > 60,000 h  
 Wxxx/339  
 IES LM79/LM80 Compliant

## Order Code

| Family        | LED Tape <sup>1</sup>    | CRI      | CCT      | Optic   | Cable / Connector <sup>2,3</sup> | Cable Position | Mounting         | Fixture length (mm)             | Ingress |
|---------------|--------------------------|----------|----------|---------|----------------------------------|----------------|------------------|---------------------------------|---------|
| VarioLED 5560 | -----                    | W9       | ---      | OP      | ---                              | E              | AT               | -----                           | IP20    |
| Bendable      | HD10-3.0 w/ft, 300 lm/ft | W9 90CRI | 27 2700K | OP Opal | FM Female & Male (4")            | E End          | AT Adhesive Tape | Refer to length chart on page 3 | IP20    |
|               | HD17-5.2 w/ft, 490 lm/ft |          | 30 3000K |         | M5 Male one side only (4")       |                |                  |                                 |         |
|               |                          |          | 35 3500K |         | OB Open Cable both sides (6")    |                |                  |                                 |         |
|               |                          |          | 40 4000K |         | OS Open Cable one side only (6") |                |                  |                                 |         |

<sup>1</sup> Delivered Lumens @3000K with Clear Optic. <sup>2</sup> Does not include endcaps. <sup>3</sup> 2 x 22 AWG wires are supplied. See page 2 for more connectors.

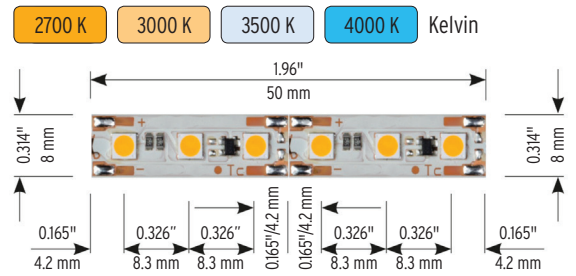
## LED Tape Specifications

Color vector graphic

Color distortion graphic

R<sub>r</sub> 89  
 R<sub>v</sub> 103  
 CRI 90  
 R9 66

— Reference illuminant — Test source @ ???K



|              |   | HD10 |                       | HD17              |                       |                   |     |
|--------------|---|------|-----------------------|-------------------|-----------------------|-------------------|-----|
|              |   | CCT  | Lumen/ft <sup>4</sup> | W/ft <sup>8</sup> | Lumen/ft <sup>4</sup> | W/ft <sup>8</sup> |     |
| Static White | ● | W927 | 2,700 K               | 300               | 3.0                   | 480               | 5.2 |
|              | ● | W930 | 3,000 K               | 300               | 3.0                   | 490               | 5.2 |
|              | ● | W935 | 3,500 K               | 310               | 3.0                   | 510               | 5.2 |
|              | ● | W940 | 4,000 K               | 320               | 3.0                   | 520               | 5.2 |

|  | HD10       | HD17       |
|--|------------|------------|
| Power (W/ft) <sup>8</sup>              | 3.0        | 5.2        |
| Efficacy (lm / W) <sup>8</sup>         | 108        | 102        |
| Max length (ft)                        | 27.9       | 23.0       |
| CRI / R9 (up to)                       | 90 / 66    | 90 / 66    |
| R <sub>r</sub> / R <sub>v</sub>        | 89 / 103   | 89 / 103   |
| Temp. Tc-point (Ta <sub>max</sub> )    | 158°F/70°C | 158°F/70°C |
| Max ambient temp. (Ta <sub>max</sub> ) | 122°F/50°C | 122°F/50°C |

<sup>4</sup> Lumen values represent bare LED tape. Refer to page 2 to calculate delivered fixture lumens by using the light efficiency percentages.  
<sup>8</sup> The given data are typical values. Due to tolerances of the production process and the electrical components, values for light output and electrical power can vary up to 10%.

## Technical Details

OPAL

50% light transmittance

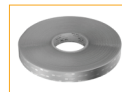


### Visible dotting

CCT decrease 215 K

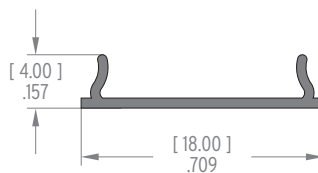
This basic lens protects your tape and maximizes light output.

## Mounting Dimensions [mm] in

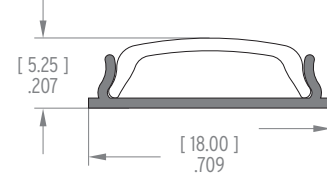


AT  
Adhesive Tape

### WITHOUT LENS





### WITH LENS



Max Bending Radius: 4 inches

## Connectors

| Item  | Description   | Model                        | Dimensions                               | Order Code           |
|---|---|------------------------------|--|----------------------|
|   | Use to connect the driver to the beginning of the LED tape run or to the next LED tape section. Female mini connector on one side and open end cable on the other side. | Static White                 | 2 x 22 Awg, 6.5 ft                       | 15000147             |
|  | Use to extend the distance between connection points. Female mini connector on one side and male mini connector on the other side.                                      | Static White<br>Static White | 2 x 22 Awg, 3.2 ft<br>2 x 22 Awg, 6.5 ft | 15000148<br>15000149 |

## VOLTAGE DROP INFORMATION FOR THE FEED-IN LINE (From Driver to Fixture)

|       | Product length |   | Cable Cross Section |      |        |      |
|-------|----------------|---|---------------------|------|--------|------|
|       |                |   | AWG 22              |      | AWG 15 |      |
|       | feet           | m | feet                | m    | feet   | m    |
| HD 10 | 3.3            | 1 | 63.6                | 19.4 | 280.8  | 85.6 |
|       | 6.6            | 2 | 31.8                | 9.7  | 140.4  | 42.8 |
|       | 9.8            | 3 | 20.9                | 6.4  | 93.5   | 28.5 |
|       | 13.1           | 4 | 15.7                | 4.8  | 70.2   | 21.4 |
|       | 16.4           | 5 | 12.4                | 3.8  | 56.1   | 17.1 |
|       | 19.6           | 6 | 10.4                | 3.2  | 46.5   | 14.2 |
|       | 22.9           | 7 | 8.8                 | 2.7  | 40.0   | 12.2 |
| HD 17 | 3.3            | 1 | 37.4                | 11.4 | 165.6  | 50.4 |
|       | 6.6            | 2 | 18.7                | 5.7  | 82.6   | 25.2 |
|       | 9.8            | 3 | 12.4                | 3.8  | 55.1   | 16.8 |
|       | 13.1           | 4 | 9.1                 | 2.8  | 41.3   | 12.6 |
|       | 16.4           | 5 | 7.2                 | 2.2  | 32.8   | 10.0 |
|       | 19.6           | 6 | 6.2                 | 1.9  | 27.5   | 8.4  |
|       | 22.9           | 7 | 5.2                 | 1.6  | 23.6   | 7.2  |

Calculation refers to the cable configuration on-site. Calculation based on a max. voltage drop of 0.85 V.


## LENGTH CHART - End Feed (E)

| Fixture length |      | HD10<br>3.0 Watts/Ft |                       | HD17<br>5.2 Watts/Ft |                       |
|----------------|------|----------------------|-----------------------|----------------------|-----------------------|
| inches         | mm   | Watts/fixture        | Lumens/fixture @3000K | Watts/fixture        | Lumens/fixture @3000K |
| 2.8            | 70   | 0.7                  | 69                    | 1.2                  | 113                   |
| 4.7            | 120  | 1.2                  | 118                   | 2.0                  | 193                   |
| 6.7            | 170  | 1.7                  | 167                   | 2.9                  | 273                   |
| 8.7            | 220  | 2.2                  | 216                   | 3.8                  | 354                   |
| 10.6           | 270  | 2.7                  | 266                   | 4.6                  | 434                   |
| 12.6           | 320  | 3.1                  | 315                   | 5.5                  | 514                   |
| 14.6           | 370  | 3.6                  | 364                   | 6.3                  | 595                   |
| 16.5           | 420  | 4.1                  | 413                   | 7.2                  | 675                   |
| 18.5           | 470  | 4.6                  | 462                   | 8.0                  | 755                   |
| 20.5           | 520  | 5.1                  | 512                   | 8.9                  | 836                   |
| 22.4           | 570  | 5.6                  | 561                   | 9.7                  | 916                   |
| 24.4           | 620  | 6.1                  | 610                   | 10.6                 | 996                   |
| 26.4           | 670  | 6.6                  | 659                   | 11.4                 | 1077                  |
| 28.3           | 720  | 7.1                  | 708                   | 12.3                 | 1157                  |
| 30.3           | 770  | 7.6                  | 758                   | 13.1                 | 1238                  |
| 32.3           | 820  | 8.1                  | 807                   | 14.0                 | 1318                  |
| 34.3           | 870  | 8.6                  | 856                   | 14.8                 | 1398                  |
| 36.2           | 920  | 9.1                  | 905                   | 15.7                 | 1479                  |
| 38.2           | 970  | 9.5                  | 954                   | 16.5                 | 1559                  |
| 40.2           | 1020 | 10.0                 | 1004                  | 17.4                 | 1639                  |
| 42.1           | 1070 | 10.5                 | 1053                  | 18.2                 | 1720                  |
| 44.1           | 1120 | 11.0                 | 1102                  | 19.1                 | 1800                  |
| 46.1           | 1170 | 11.5                 | 1151                  | 20.0                 | 1880                  |
| 48.0           | 1220 | 12.0                 | 1200                  | 20.8                 | 1961                  |
| 50.0           | 1270 | 12.5                 | 1250                  | 21.7                 | 2041                  |
| 52.0           | 1320 | 13.0                 | 1299                  | 22.5                 | 2122                  |
| 53.9           | 1370 | 13.5                 | 1348                  | 23.4                 | 2202                  |
| 55.9           | 1420 | 14.0                 | 1397                  | 24.2                 | 2282                  |
| 57.9           | 1470 | 14.5                 | 1446                  | 25.1                 | 2363                  |
| 59.8           | 1520 | 15.0                 | 1496                  | 25.9                 | 2443                  |
| 61.8           | 1570 | 15.4                 | 1545                  | 26.8                 | 2523                  |
| 63.8           | 1620 | 15.9                 | 1594                  | 27.6                 | 2604                  |
| 65.7           | 1670 | 16.4                 | 1643                  | 28.5                 | 2684                  |
| 67.7           | 1720 | 16.9                 | 1692                  | 29.3                 | 2764                  |
| 69.7           | 1770 | 17.4                 | 1742                  | 30.2                 | 2845                  |
| 71.7           | 1820 | 17.9                 | 1791                  | 31.0                 | 2925                  |
| 73.6           | 1870 | 18.4                 | 1840                  | 31.9                 | 3005                  |
| 75.6           | 1920 | 18.9                 | 1889                  | 32.7                 | 3086                  |
| 77.6           | 1970 | 19.4                 | 1938                  | 33.6                 | 3166                  |

## Compatible Drivers

| Item  | Specifications  | Downloads  |
|---|---|--|
| <b>LED LINEAR™</b><br>Non-Dimmable Drivers   | <ul style="list-style-type: none"> <li>• UL 8750 Listed Enclosure - With Built-In Junction Boxes</li> <li>• Universal Input Voltage 120V - 277V</li> <li>• IP65 - For Both Indoor and Outdoor Use</li> <li>• No Minimum Load Requirement</li> <li>• 24V Constant Voltage Output, Class 2</li> <li>• Available in three wattages 30W, 60W and 96W</li> <li>• Max. Dimensions: 12-1/8" x 2-3/8" x 1-3/8"</li> </ul>   | <a href="#">30 W SPEC SHEET</a><br><a href="#">60 W SPEC SHEET</a><br><a href="#">96 W SPEC SHEET</a><br><a href="#">INSTALLATION INSTRUCTIONS</a> |
| <b>LED LINEAR™</b><br>0-10V Dimmable Drivers   | <ul style="list-style-type: none"> <li>• UL 8750 Listed Enclosure - With Built-In Junction Boxes</li> <li>• 0-10V Dimmable - Flicker Free Down to 1%</li> <li>• Universal Input Voltage 120V - 277V</li> <li>• IP65 - For Both Indoor and Outdoor Use</li> <li>• 24V Constant Voltage Output, Class 2, Class P</li> <li>• Available in three wattages 30W, 60W and 96W</li> <li>• Max. Dimensions: 12-1/8" x 2-3/8" x 1-3/8"</li> </ul>   | <a href="#">30 W SPEC SHEET</a><br><a href="#">60 W SPEC SHEET</a><br><a href="#">96 W SPEC SHEET</a><br><a href="#">INSTALLATION INSTRUCTIONS</a> |
| <b>LED LINEAR™</b><br>ELV/Triac Dimmable Drivers   | <ul style="list-style-type: none"> <li>• UL 8750 Listed Class 2 Enclosure</li> <li>• 24V constant voltage output</li> <li>• Compact size yet high efficiency and performance in dry and damp environments (IP67)</li> <li>• Multiple Inputs: 120V or 277V</li> <li>• Fully dimmable: ELV Dimmers - Reverse or Adaptive Phase Control, Trailing Edge</li> <li>• Available in two wattages 48W and 96W</li> <li>• Multiple Circuits are available up to 4 units (up to 384W)</li> </ul>                       | <a href="#">48 W SPEC SHEET</a><br><a href="#">96 W SPEC SHEET</a><br><a href="#">INSTALLATION INSTRUCTIONS</a>                                    |
| <br><b>MEAN WELL</b><br>PWM Dimmable Drivers  | <ul style="list-style-type: none"> <li>• Universal AC input / Full range (up to 305VAC)</li> <li>• Constant voltage PWM style output</li> <li>• Built-in 3 in 1 dimming function (0-10Vdc or PWM signal or resistance)</li> <li>• Dimming range : 0-100%</li> <li>• Class 2 power unit</li> <li>• Suitable for dry / damp / wet locations</li> <li>• UL Recognized component, 5 years warranty</li> </ul>   | <a href="#">40 W SPEC SHEET</a><br><a href="#">60 W SPEC SHEET</a><br><a href="#">90 W SPEC SHEET</a><br><a href="#">INSTALLATION INSTRUCTIONS</a> |
| <br><b>LUTRON</b><br>Dimmable Drivers     | <ul style="list-style-type: none"> <li>• UL Listed Enclosure</li> <li>• Dimming Range: 100% to 1% and 0.1% (Premiere)</li> <li>• LED lighting turns on to any dimmed level without flashing to full brightness</li> <li>• Operating Voltage: 120V~ to 277V~ at 50/60 Hz</li> <li>• Rated lifetime of 50,000 hours at 40°C (104°F) ambient temperature and maximum loading</li> <li>• For rated warranty, ambient temperature not to exceed 40°C (104°F)</li> <li>• Open-circuit protected output</li> </ul> | <a href="#">HI-LUME SPEC SHEET</a><br><a href="#">HI-LUME PREMIERE SPEC SHEET</a><br><a href="#">INSTALLATION INSTRUCTIONS</a>                     |
| <b>eldoLED</b><br>DALI/DMX Dimmable Drivers    | <ul style="list-style-type: none"> <li>• Available in linear or rectangular format</li> <li>• 100W, DMX/DALI interface for Static White, Tunable White and RGB/W Applications</li> <li>• 4 control channels</li> <li>• 24V constant voltage, 4 x 24V outputs</li> <li>• Metal or plastic case options</li> </ul>  | <a href="#">100 W SPEC SHEET</a><br><a href="#">INSTALLATION INSTRUCTIONS</a>  |

## Controllers

| Item  | Specifications   | Downloads                            |
|---|--|--------------------------------------|
| <b>eldoLED</b><br>Controllers  | <b>180/D</b> DMX Controller for RGB/W and Tunable White Applications         | <a href="#">180/D SPEC SHEET</a>     |
|   | <b>210/D</b> Dali Controller for Static White Applications                   | <a href="#">210/D SPEC SHEET</a>     |
|   | <b>211/D-LG</b> 0-10V Logarithmic Dimming Controller                         | <a href="#">211/D-LG SPEC SHEET</a>  |
|   | <b>211/D-LN</b> 0-10V Linear Dimming Controller                              | <a href="#">211/D-LN SPEC SHEET</a>  |
|   | <b>212/D</b> DMX Controller for Static White and Static Color Applications   | <a href="#">212/D SPEC SHEET</a>     |
|   | <b>DimWheel</b> DMX Wall Controller for RGB/W and Tunable White Applications | <a href="#">DIM WHEEL SPEC SHEET</a> |

Click for more information

VOLTAGE DROP CALCULATOR

INSTALLATION

LED LINEAR TECHNOLOGY