

XOOLUX NANO

Grazing with precision



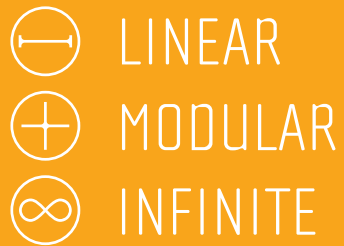
LED LINEARTM
lighting solutions

Member of the
Fagerhult Group

XOOLUX NANO

THE NEW ERA OF LIGHTING

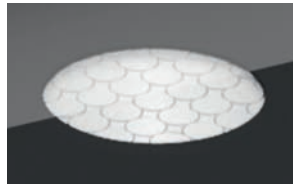
- As one of the early products of the LED Linear™ portfolio, XOOLUX was a flagship grazer during the early years as it added optical excellence to the LED concept. As new technologies emerged, the idea of new XOOLUX NANO arose with the intention of bringing the excellence of its predecessor to a new era. The recent breakthroughs in nano technology and Chip Scale Package (CSP) LEDs enabled the design of a powerful, sharp and elegant successor in the name of XOOLUX NANO.
- The integration of NanoRay technology enables an accurate light beam while minimizing the color over angle for optimal grazing effects. In addition, new CSP LEDs integrated on LED Linear's Tj Away® tape substrate enable XOOLUX NANO to offer high wattage in compact design. The combination of three mounting clips and grooves on the side of the luminaire makes it possible to tilt the luminaire from 0° – 45° in 5° increments in order to easily adjust the lighting direction in a precise manner.
- XOOLUX NANO is a luminaire designed for grazing applications. The updated IP classification stretch to IP65, ensuring water resistance and durability for outdoor use. The minimalistic and slim design adds to the aesthetical dimensions of any project and enables installations close to the illumination target while keeping the luminaire as discrete as possible within the architecture.



KEY FEATURES

NANO TECHNOLOGY

Nano Ray In order to guarantee homogeneous light and limited color over angle, the LED Linear™ NanoRay technology was developed. It enables the design of a complex optical system with minimal dimensions achieving results that was only possible using large optics. These nanoscale lenses provide an accurate beam control and no direct view to the LEDs.



ELEGANT DESIGN

The combination of materials, slim design and high lumen output makes X00LUX NANO an outstanding product. The use of the Tj Away® technology, CSP LEDs and NanoRay enabled our designers to minimize the footprint of the design without compromising optical performance and lifetime of the fixture. X00LUX NANO's design appoints itself as a new standard in the LED grazer class thanks to its slim form factor, easy implementation and its solid optical performance.



APPLICATION

The accurate light beam in combination with the different light distributions makes XOODLUX NANO perfectly suitable for wall grazing and wall washing applications. The lighting effects are possible to achieve indoor as well as outdoor environments where walls, façades and any other vertical surfaces can be homogeneously illuminated.



MOUNTING

MOUNTING BRACKETS

It is simple to adjust XOODLUX NANO from 0°– 45° in 5° increments to achieve an accurate orientation. 0°, 15° and 30° brackets are available in aluminum for a robust installation on façade. A cost efficient 0° PVC bracket is also available for indoor installations.

Bracket 0°
black, PVC



Bracket 0°
black, Aluminum

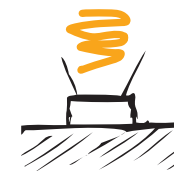
Bracket 15°
black, Aluminum



Bracket 30°
black, Aluminum

MOUNTING OPTIONS

Floor



Ceiling

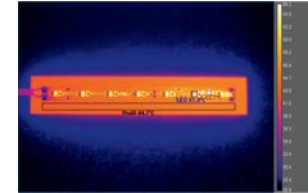
TECHNICAL DATA

- Lumen output from 100 lm/ft to 890 lm/ft
- Color temperature between 2,200 K and 5,000 K
- CRI up to 95
- IP 65
- Standard lengths up to 3.2 ft.
- Efficacy up to 76 lm/W
- Available in Static White and Tunable White
- Optics: Oval (15° x 40°), 15° or 25°
- Lifetime 60,000 h L90/B10

The integrated nano optic and the small form factor of XOOLUX NANO makes it suitable for a wide range of grazing and wall washing applications while keeping the fixture invisible on the façade or as confined as possible in an indoor application.

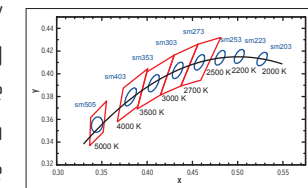
LIGHTING INNOVATIONS

TjAway® Thermal Management XOOLUX NANO embeds the LED Linear™ Tj Away® technology which provides optimal heat dissipation of the LED to the housing profile. This enables the miniaturization of the luminaire's footprint while ensuring an extended lifetime compared to conventional LED technologies.



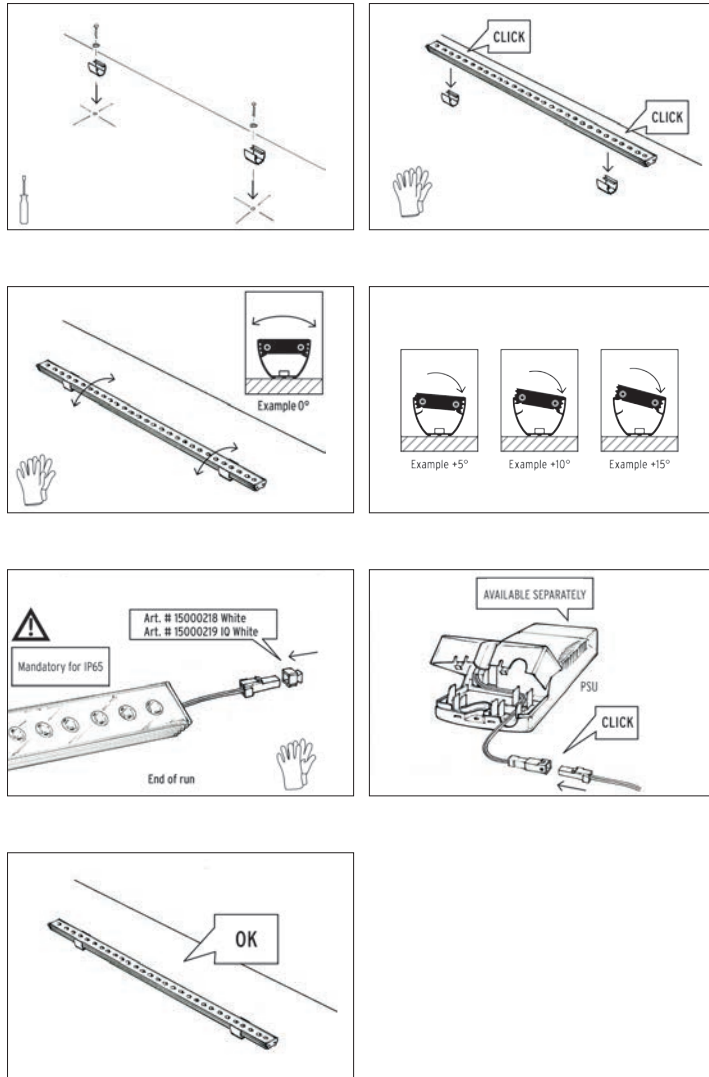
Experimental setup: 12 W/ft LED tape with thin flexible PCB mounted on flat aluminum plate LED temperature does not exceed 60°C (140°F).

One Bin Only Color consistency and homogeneity play a key role in any linear lighting application. To ensure an outstanding quality of the light, LED Linear™ introduced One Bin Only which ensures that all LEDs used in our luminaires are picked from one bin centered on the target CCT within a 3 step MacAdams Ellipse. They are used to determine visual color deviations and indicate differences in light color of individual LEDs. Three step MacAdam ensures a color variation unnoticeable by the human eye and therefore an optimal lighting quality.



Black Body Curve —
LED Linear™ Binning —
ANSI Binning —

MOUNTING



Please see our detailed mounting instructions on the website

REFERENCES



Illuminating specific elements in lobby and reception areas creates depth effect by grazing light.



Exterior facades with stucco elements receive a new face.



Grazing applications on textured walls up to 32 ft. height highlight subtle details.



Suitable for outdoor grazing applications. Setting new effects in window arcs through grazing light.

LED LINEAR™

lighting solutions

Member of the
Fagerhult Group



LED Linear™ USA, Inc.
2186 Liberty Drive
Niagara Falls, NY 14304
USA
Phone: +1 716 283 4400
usa@led-linear.com



For further information please visit our website www.ledlinearusa.com

Edition 02/2019 · All rights reserved. Subject to change.