

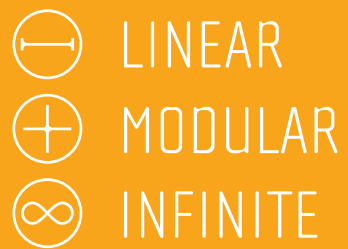
XOOLINE

The Linear Allrounder



LED LINEAR™
lighting solutions

Member of the
Fagerhult Group



XOO LINE

COMPACT AND POWERFUL

- Light is the ultimate way to lift good architecture. Applying accent light to enhance a wall texture or using a wall washer to highlight a piece of art creates pleasant atmospheres. In order to get it right, a high quality luminaire is needed. This is why XOO LINE was developed.
- XOO LINE is a minimalistic modular luminaire suitable for wall washing, wall grazing and general lighting. The IP rating ranges up to IP67, enabling outdoor use. A possible output of 1,520 lm/ft combined with color temperatures ranging between 2,000 K to 5,100 K makes XOO LINE a multifunctional luminaire. 11 light distribution optics offer the modularity needed to create the best lighting concepts over a wide range of applications.
- Thermal heat management is crucial when designing a minimalistic luminaire and with the LED Linear™ Tj Away® technology, the smallest form factor was possible.

KEY FEATURES

LINEAR

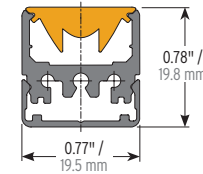
The minimal linear form factor of XDOLINE enables installations in tight architectural areas which makes it possible to highlight walls, shelves or coves despite space limitations. The linear design provides a better light distribution than round equivalents and it is possible to mount the luminaire closer to the wall.



MODULAR

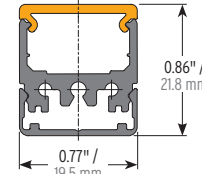
The luminaire is freely scalable up to 6,58 ft (2 m) with a lumen output ranging between 120lm/ft –1,520lm/ft and a wide range of color temperatures. A high degree of modularity is also achieved through 11 different optics. These components all add up to offer total freedom of creativity for lighting designers and architects.

THE LIGHTING TOOLBOX



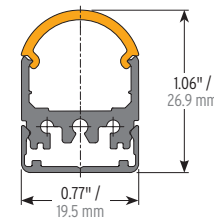
Flat Lens

10°
30°
60°



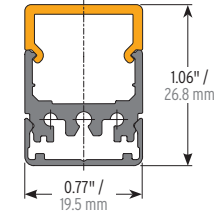
Low Square

clear
diffuse
opal



Round

clear
diffuse
opal

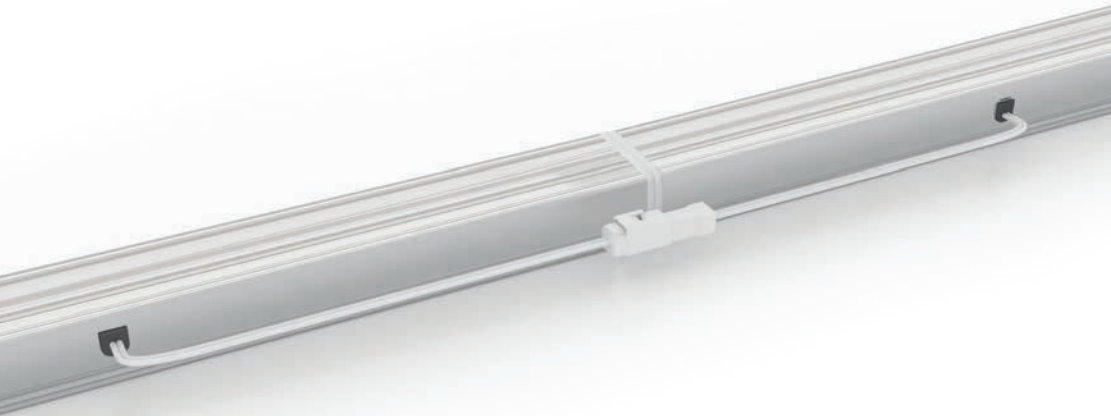


High Square

diffuse
opal

INFINITE

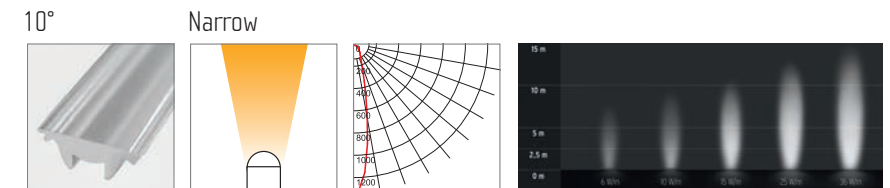
The translucent end caps make it possible to create infinite lines of light. This enables consistent light emission together with homogeneous fixture surface. XOO LINE installs without visible light gap between the luminaires via lateral cable connections.



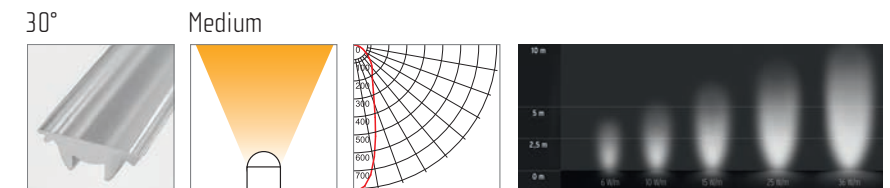
Thames Tower, London

Photo: Jack Hobhouse

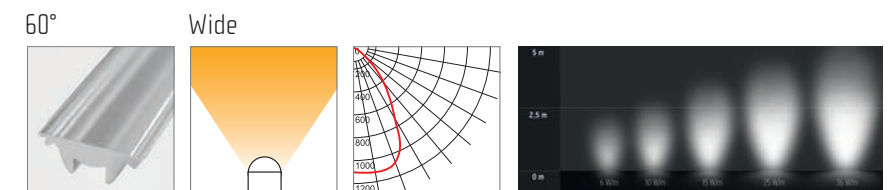
OPTICS



The 10° Lens is suitable for wall grazing



The 30° Lens is suitable for general, accent and decorative illumination



The 60° Lens is suitable for general, accent decorative illumination and wall washing

TECHNICAL DATA

- Lumen output ranging between 120 lm/ft - 1520 lm/ft
- Color temperatures ranging between 2,000 K – 5,100 K
- Efficacy up to 140 lm/W
- CRI: Up to 95
- Up to 11 different optics
- Lifetime 60,000 h L80/B10
- Indoor and Outdoor Models
- Available in Static White, Tunable White and RGB

XOOLINE offers high flexibility to lighting designers and architects, making its implementation possible in any architectural concept. The wide range of color temperatures and lumen output in combination with the various optics define the luminaire.

LIGHTING INNOVATIONS



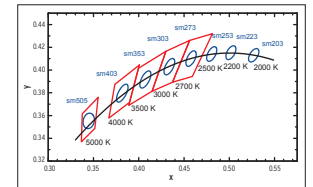
XOOLINE embeds the LED Linear™ Tj Away® technology which provides optimal heat dissipation of the LED to the housing profile. This enables the miniaturization of the luminaire's footprint while ensuring an extended lifetime compared to conventional LED technologies.



Experimental setup: 12 W/ft LED tape with thin flexible PCB mounted on flat aluminum plate LED temperature does not exceed 60°C (140°F).



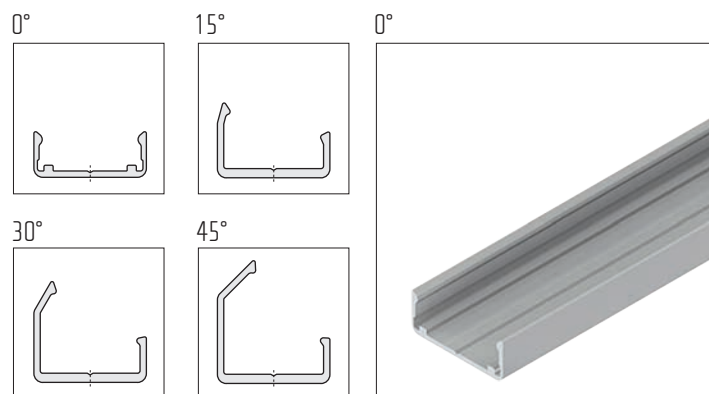
Color consistency plays a key role as much as homogeneity in any linear lighting application. To ensure an outstanding quality of the light, LED Linear™ introduced One Bin Only which ensures that all LEDs used in our luminaires are picked from one bin centered on the target CCT within a 3 step MacAdams Ellipse. They are used to determine visual color deviations and indicate differences in light color of individual LEDs. 3 step MacAdam ensures a color variation unnoticeable by the human eye and therefore an optimal lighting quality.



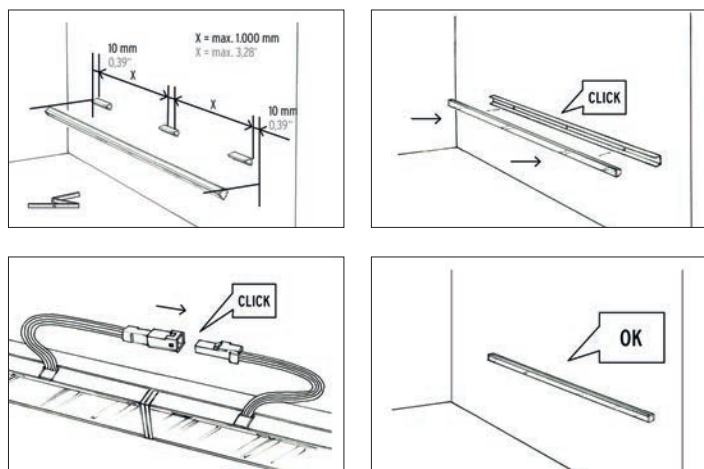
Black Body Curve —
LED Linear™ Binning —
ANSI Binning —

MOUNTING

BRACKETS / CHANNEL



INSTRUCTIONS WITH A CHANNEL EXAMPLE



REFERENCES



Image A: Illumination over vertical surfaces and setting accents with soft light

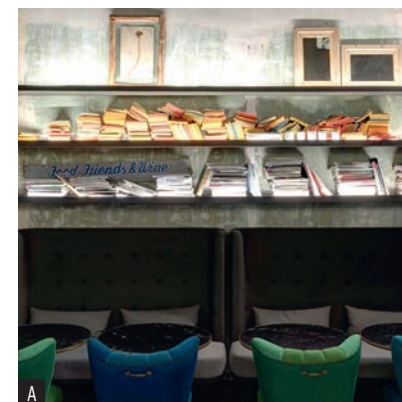


Image B: Accent lighting for bars, hotels and stores



Image B: Ambient lighting for entrance areas with high ceilings

A | Concept Store & Café Jaime Beriestain, Barcelona | Photo: Miguel Coll

B | HOME LAB' furniture store entrance area, North France



LED Linear™ USA, Inc.

2186 Liberty Drive
Niagara Falls, NY 14304
USA

Phone: +1 716 283 4400
usa@led-linear.com