

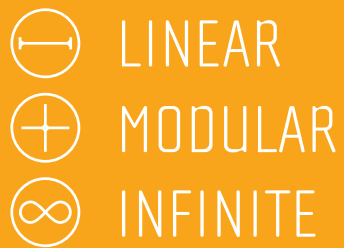
OCEANOS

The rugged in-ground light line



LED LINEARTM
lighting solutions

Member of the
Fagerhult Group



OCEANOS

GUIDING THROUGH LIGHT

- Exterior and interior in-ground installations are challenging which requires a robustly engineered, well thought-out and complete system solution. The installation and light effect will need to withstand pedestrians, vehicles, and all the elements of the installation environment.
- The use of polyurethane contributes to the resistance against UV-light and salt water. A V4A stainless steel housing guarantees resistance against external impacts. The housing also allows easy installation and maintenance. The fully homogeneous light surface makes it possible to connect multiple fixtures to each other, creating an infinite line of light.
- OCEANOS enables a minimal color shift and optimal LED spectrum rendition. The luminaire is suitable in all outdoor environments with light output up to 500 lm/ft combined with an efficacy of 107 lm/W. The color temperatures range between 2,000 K – 5,000 K.

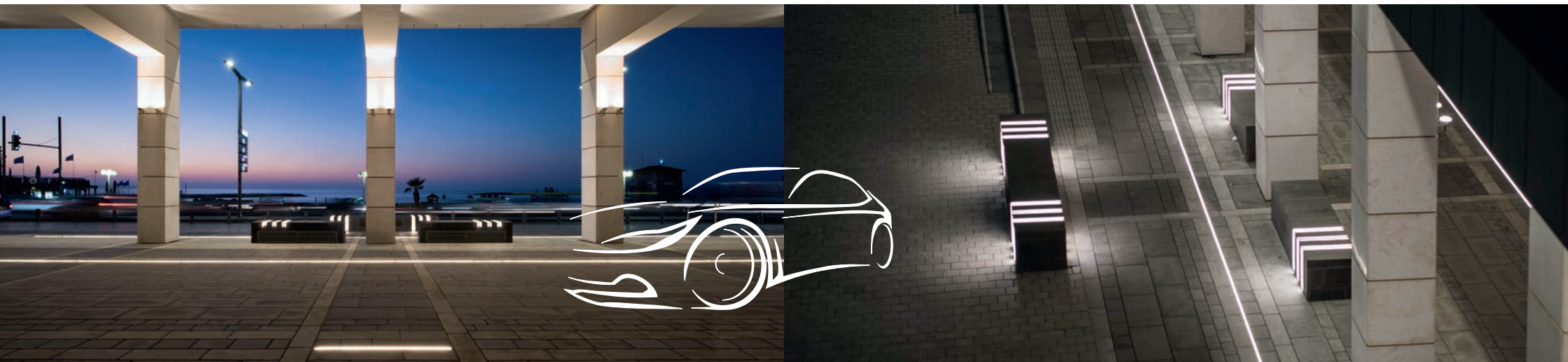
KEY FEATURES

DRIVE OVER

Bringing homogeneous in-ground light lines into areas where pedestrians and vehicles commonly move requires a notable level of robustness. OCEANOS can be traversed by a vehicle, enabling the implementation on squares, streets, pathways and roads according to EN 60598-2-13. Its housing is made entirely of V4A stainless steel ensuring excellent longevity.

SEAMLESS LIGHT LINES

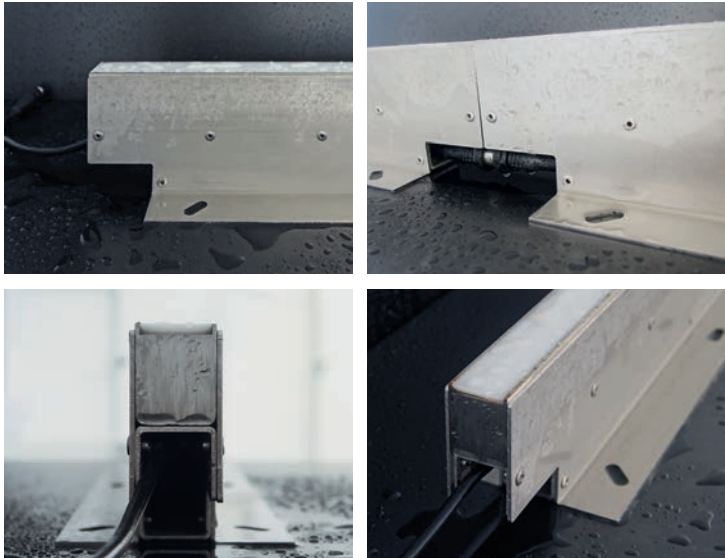
OCEANOS allows seamless lines of homogeneous light. The discrete frame disappears offering a focus on the large lighting surface. Thanks to a new mounting approach, OCEANOS can be installed without a dummy piece. The luminaires can only be dismantled using a dedicated tool which guarantees safety preventing theft and vandalism. In-ground lighting can also serve as a guide, where pedestrians and vehicles are given a lead to follow.



ROBUSTNESS

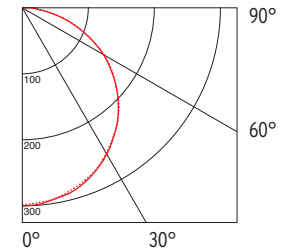
The IP67 and IK10 classifications are achieved through a polyurethane encapsulation and a V4A stainless steel housing. This makes OCEANOS resistant to environmental and mechanical impacts.

The fixture can withstand an impact of 20 Joule, equivalent to 11 lbs. dropped from 1.31ft. and is also resistant to UV-light, saltwater, temporary water immersion and solvents.



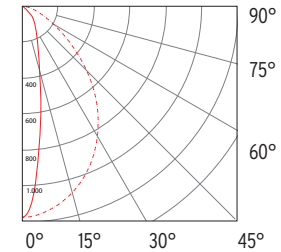
OPTICS

Opal



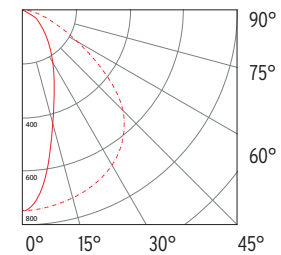
Provides a homogeneous light distribution. Ideal for decorative light lines or orientation applications.

10°



Suitable for wall grazing applications.

30°



For wall washing and grazing applications.

TECHNICAL DATA

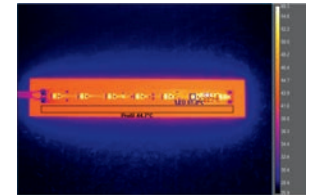
- Efficacy up to 107 lm/W
- Lumen output from 110 lm/ft to 500 lm/ft.
- Color temperatures range between 2,000 K - 5,000 K
- CRI up to 95
- Optics: Opal, 10°, 30°
- IP67 & IK10
- Available in Static White, Tunable White and RGB
- Lifetime 60,000 h L80/B10

When a robust luminaire for outdoor guiding or in-ground mounted grazing applications is requested, OCEANOS is the go-to solution within LED Linear's portfolio. The combination of a wide range of lumen output and high level of efficiency makes the fixture stand out.

LIGHTING INNOVATIONS

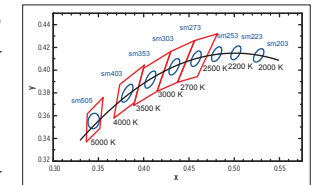
True Color OCEANOS offers a minimal color shift and therefore an optimal rendition of the LED's spectrum. This provides homogeneity and consistency for lighting installation using other luminaires of the True Color range.

TjAway® Thermal Management OCEANOS embeds the LED Linear™ Tj Away® technology which provides optimal heat dissipation of the LED to the housing profile. This enables the miniaturization of the luminaire's footprint while ensuring an extended lifetime compared to conventional LED technologies.



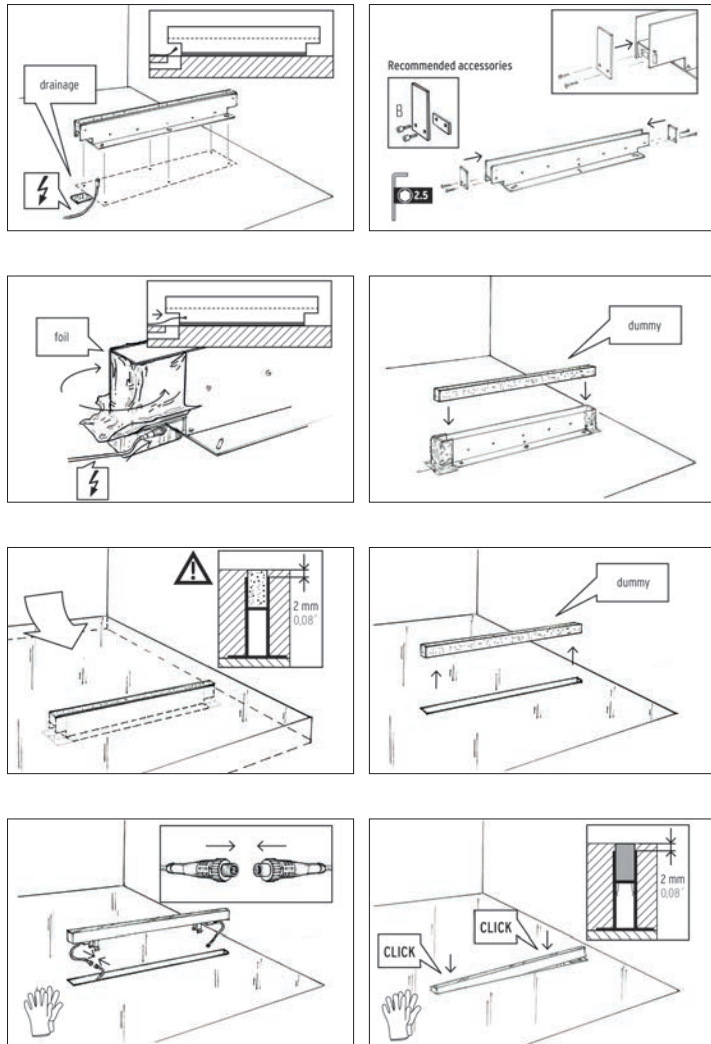
Experimental setup: 12 W/ft LED tape with thin flexible PCB mounted on flat aluminum plate. LED temperature does not exceed 60°C (140°F).

One Bin Only Color consistency plays a key role as much as homogeneity in any linear lighting application. To ensure an outstanding quality of the light, LED Linear™ introduced One Bin Only which ensures that all LEDs used in our luminaires are picked from one bin centered on the target CCT within a 3 step MacAdams Ellipse. They are used to determine visual color deviations and indicate differences in light color of individual LEDs. 3 step MacAdam ensures a color variation unnoticeable by the human eye and therefore an optimal lighting quality.



Black Body Curve ———
LED Linear™ Binning ———
ANSI Binning ———

MOUNTING



Please see our detailed mounting instructions on the website

REFERENCES



The in-ground steel housing enables a robustness in public areas to walk over.



Seamless light lines that guide pedestrians.



Accenting staircases in public areas create a safe atmosphere and provides orientation.



The high degree of homogeneity adds to the total perception of space.



LED Linear™ USA, Inc.

2186 Liberty Drive
Niagara Falls, NY 14304
USA

Phone: +1 716 283 4400
usa@led-linear.com