

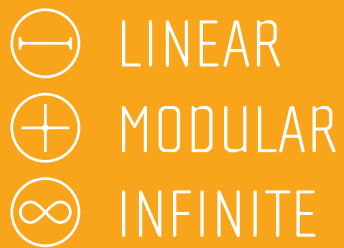
# KALYPSO

Highlighting architectural details



**LED LINEAR**™  
lighting solutions

Member of the  
Fagerhult Group



# KALYPSO

## POWERFUL GRAZER

- Highlighting textured façades, walls and sculptures needs a brilliant luminaire. A linear and slim design would solve the issue of small space and enable long lines of light, creating the perfect product for decorative lighting, wall grazing and wall flooding.
- KALYPSO is based on a powder coated aluminum profile in combination with polyurethane encapsulation which provides a high degree of robustness. Its ingress reaches IP67 as well as IK10 for impact resistance. The translucent end caps make it possible to create infinite lines of light. This is further enhanced by the cable runway, hiding cables and mounting clips.
- KALYPSO is a minimalistic luminaire suitable for decorative lighting as well as for wall grazing and wall washing. Due to its three light distribution optics and its IP67 rating, a wide range of applications are possible. A maximum output of 1,090 lm/ft combined with a CCT ranging between 2,000 K to 5,000 K makes KALYPSO a multifunctional luminaire.

# KEY FEATURES

## OPTICS

The different light distribution optics enable the possibility to adapt KALYPSO to the specific project. The 10° optic is better for wall grazing, the 30° is made for accent and decorative light and the 60° optic is best for wall washing. KALYPSO stands out through the combination of these optics and the polyurethane encapsulation, making all kinds of outdoor applications possible.

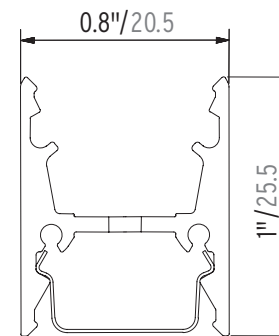


Photo: Photowalas

# KEY FEATURES

## INVISIBLE CABLING

The cable groove makes cables and mounting clips disappear, keeping a straight and clean line of light. The left image illustrates the fixture profile where the LEDs are encapsulated in the upper cavity and mounting clips integrate in the lower cavity. The right image shows how the cables are invisible when multiple fixtures are mounted end to end.



# KEY FEATURES

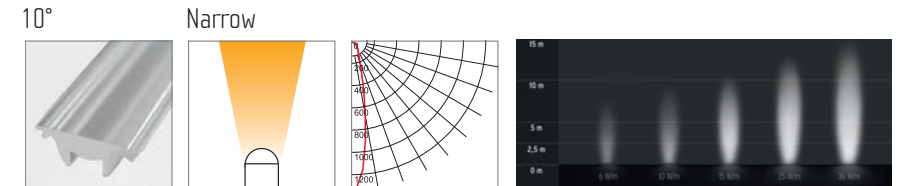
## IP67 & IK10

KALYPSO is a go-to product for outdoor wall grazing and wall washing applications. The IP67 and IK10 classifications are achieved through a clear polyurethane encapsulation within the aluminum fixture housing. This makes KALYPSO resistant to environmental and mechanical impacts.

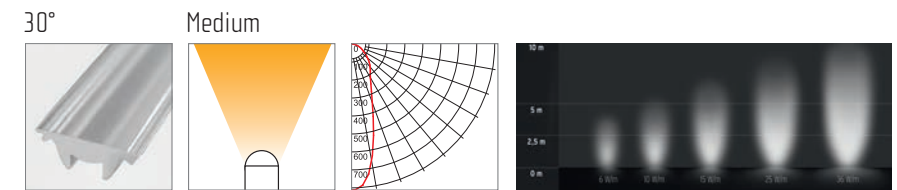
The fixture can withstand an impact of 20 Joule, equivalent to 11 lbs. dropped from 1.31ft. and it is resistant to UV-light, salt water, temporary water immersion and solvents.



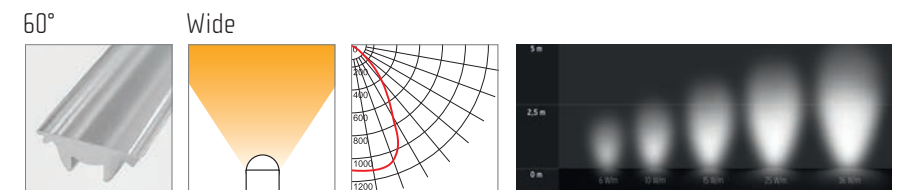
## OPTICS



The 10° Lens is suitable for wall grazing



The 30° Lens is suitable for general, accent and decorative illumination



The 60° Lens is suitable for general, accent and decorative illumination as well as wallwashing

# TECHNICAL DATA

- Lumen output from 100 lm/ft to 1,090 lm/ft
- Color temperature between 2,000 K and 5,000 K
- 10°, 30° and 60° light distribution options
- CRI up to 95
- Efficacy up to 99 lm/W
- IP 67 & IK10
- Available in Static White, Tunable White and RGB
- Lifetime 60,000 h L80/B10

The many options offered by KALYPSO in terms of lumen output, color temperature and efficiency make it possible to modify the product to fit any project. This range of possibilities makes KALYPSO a go-to product for wall grazing and wall washing applications.

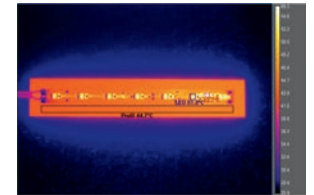
# LIGHTING INNOVATIONS

## True Color

KALYPSO has an optimal rendition of the LED spectrum, meaning minimal color shift. This enables an easier combination with other luminaires within the same façade by offering an overall color consistency.

## TjAway® Thermal Management

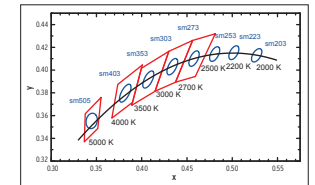
KALYPSO embeds the LED Linear™ Tj Away® technology which provides optimal heat dissipation of the LED to the housing profile. This enables the miniaturization of the luminaire's footprint while ensuring an extended lifetime compared to conventional LED technologies.



Experimental setup: 12 W/ft LED tape with thin flexible PCB mounted on flat aluminum plate LED temperature does not exceed 60°C (140°F).

## One Bin Only

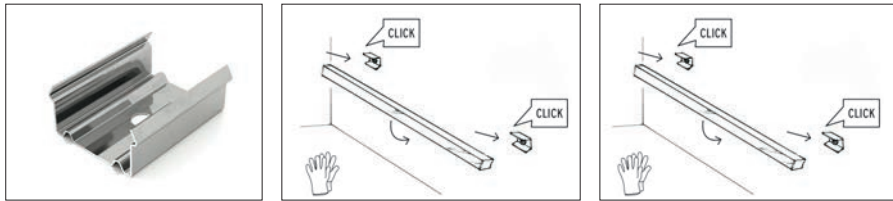
Color consistency plays a key role as much as homogeneity in any linear lighting application. To ensure an outstanding quality of the light, LED Linear™ introduced One Bin Only which ensures that all LEDs used in our luminaires are picked from one bin centered on the target CCT within a 3 step MacAdams Ellipse. They are used to determine visual color deviations and indicate differences in light color of individual LEDs. 3 step MacAdam ensures a color variation unnoticeable by the human eye and therefore an optimal lighting quality.



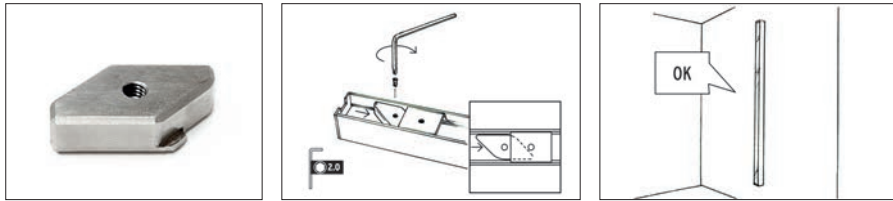
Black Body Curve —  
LED Linear™ Binning —  
ANSI Binning —



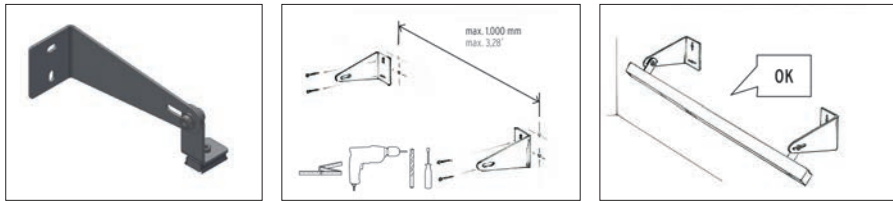
# MOUNTING



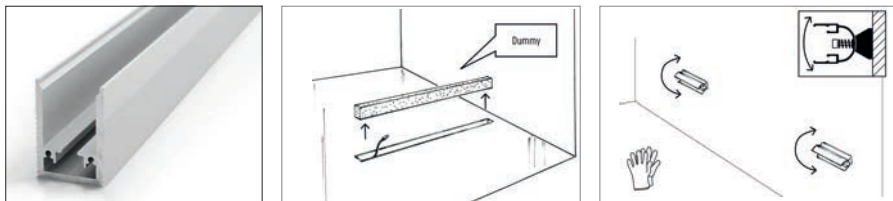
ADONIS is easily installed with the mounting clip



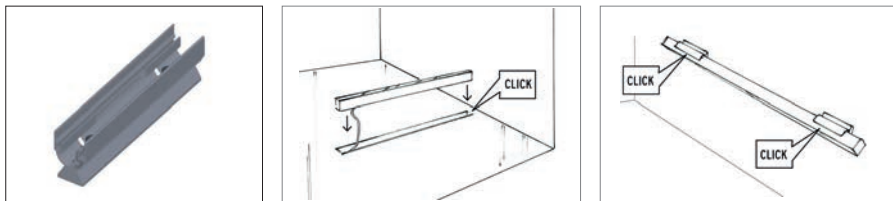
Vertical mount requires a mounting block



The adjustable wall mount set enables to tilt the fixture



In-ground channel improves drainage and protects the fixture



Adjustable mounting clip

Please see our detailed mounting instructions on the website

# REFERENCES



Efficiently highlighting architectural details



Setting accents on textured walls



Eye-catching lines in high buildings



Powerful grazing of high buildings

A | Photo: BM Light OÜ

B | Photo: Archit Prajapati

C | Photo: Photowalas

# LED LINEAR™

lighting solutions

Member of the  
Fagerhult Group



**LED Linear™ USA, Inc.**  
2186 Liberty Drive  
Niagara Falls, NY 14304  
USA  
Phone: +1 716 283 4400  
usa@led-linear.com

[www.ledlinearusa.com](http://www.ledlinearusa.com)

Art.-#: 18485-ENG - Edition 2/2019 - All rights reserved. Subject to change.