

A photograph of a modern architectural hallway. The walls are made of perforated metal panels, and recessed LED lighting strips are embedded in the walls, creating a warm, ambient glow. The floor is made of large, light-colored tiles. The hallway leads to a bright opening at the end, suggesting a transition from a dimly lit interior to a brighter exterior space.

ADONIS

Infinite light lines for all environments

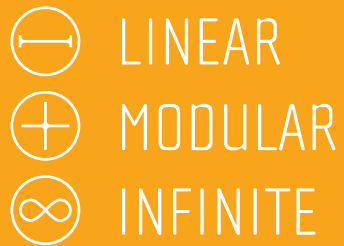
LED LINEARTM
lighting solutions

Member of the
Fagerhult Group

ADONIS

HOMOGENEITY AND CONTINUITY

- Creating visual effects with linear light adds a further dimension to architecture. By integrating light to a façade, it's possible to design an eye catching building with distinct and slim lines of light.
- ADONIS is a minimalistic linear luminaire suitable for outdoor façade lighting applications as well as indoor in-ground installations. It complements VENUS by creating straight lines and providing a higher lumen output. A possible output of 750 lm/ft. combined with CCTs ranging between 2,000K to 5,000K makes ADONIS a multifunctional luminaire.
- The luminaire is based on a powder coated aluminum profile in combination with polyurethane encapsulation which provides a high degree of robustness. Its ingress reaches IP67 as well as IK10 for impact resistance. Also, LED Linear's Tj Away technology enables the implementation of higher lumen output in a minimal form factor.



KEY FEATURES

STRAIGHT LINES OF LIGHT

By providing infinite lines of light, ADONIS is an asset to any construction. These lines reach perfection through the homogeneous and dot free light emission surface. Its translucent end caps offer the possibility to achieve a fixture-to-fixture installation with perfect light continuity.

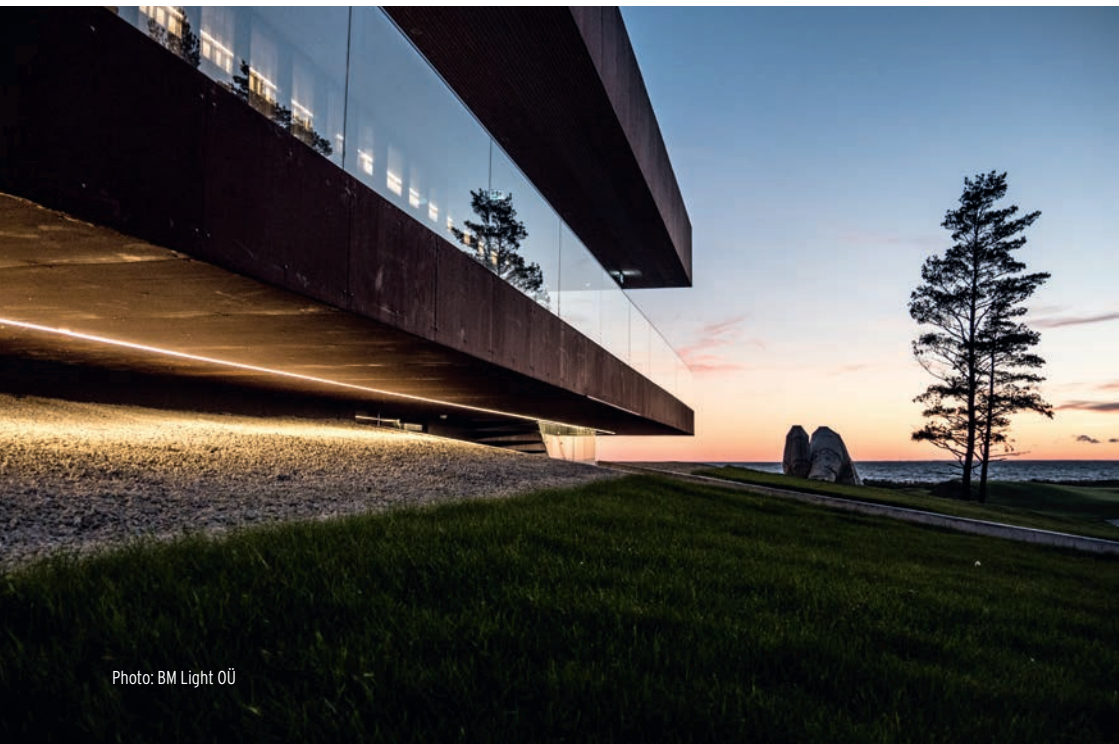
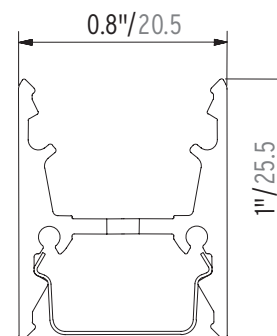


Photo: BM Light OÜ

KEY FEATURES

INVISIBLE CABLING

The cable groove makes cables and mounting clips disappear, keeping a straight and clean line of light. The left image illustrates the fixture profile where the LEDs are encapsulated in the upper cavity and mounting clips integrate in the lower cavity. The right image shows how clips and cables are invisible when multiple fixtures are mounted end to end.

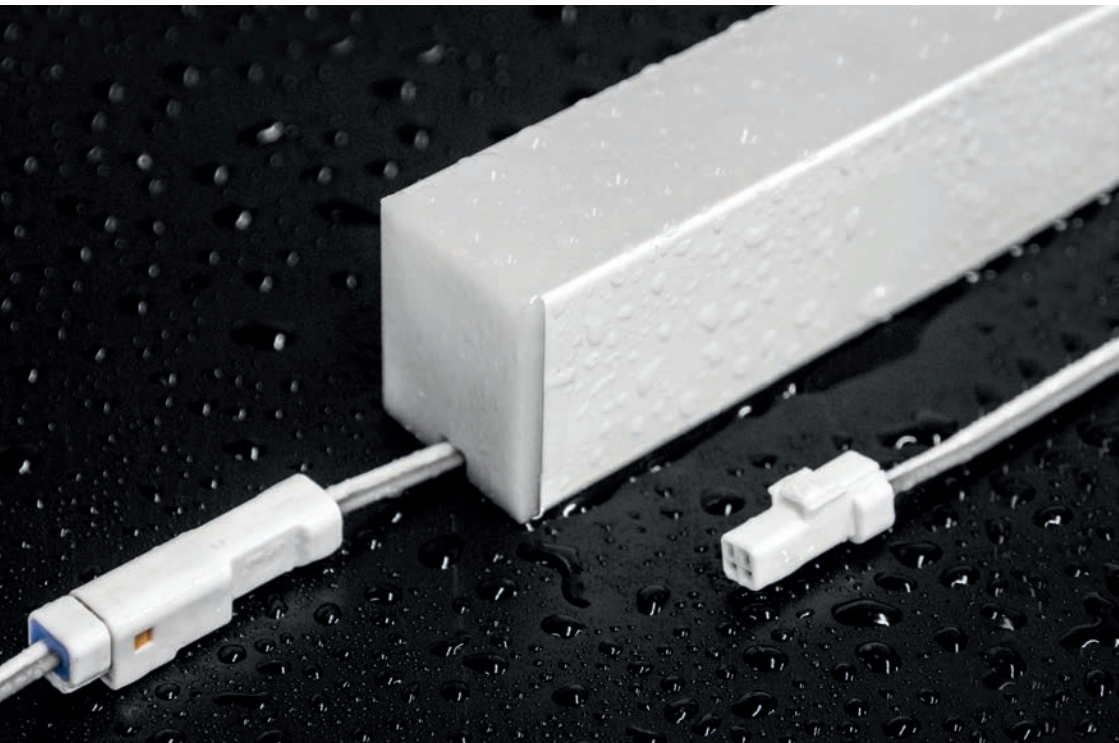


KEY FEATURES

IP67 & IK10

The IP67 and IK10 classifications are achieved through a polyurethane encapsulation within the aluminum fixture housing. This makes ADONIS resistant to environmental and mechanical impacts.

The fixture can withstand an impact of 20 Joule, equivalent to 11 lbs dropped from 1.31'. ADONIS is also resistant to temporary water immersions as well as UV-light, salt water and solvents.

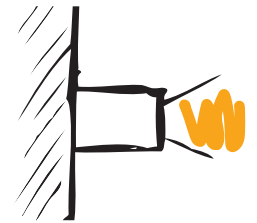


MOUNTING

The mounting options are surface and in-ground. It is possible to surface mount ADONIS both horizontally and vertically, offering creative freedom. The in-ground solution has been upgraded by a new mounting channel, improving drainage. Therefore, ADONIS is now applicable in protected outdoor environments. The new mounting channel does not allow the fixture from being removed easily offering an extra degree of protection against vandalism.



Surface

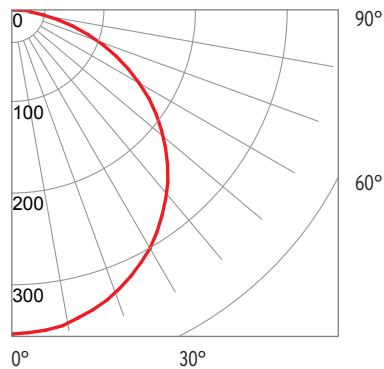


In-ground



TECHNICAL DATA

- Lumen output from 70 lm/ft to 750 lm/ft
- Color temperature between 2,000 K and 5,000 K
- CRI up to 95
- IP 67 & IK10
- Efficacy up to 69 lm/W
- Available in Static White, Tunable White and RGB
- Lifetime 60,000 h L80/B10
- RGB lifetime 30,000 h L80/B10

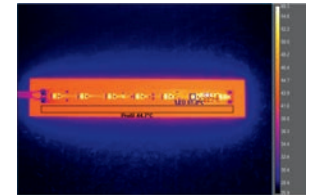


The opal light distribution of ADONIS makes it a perfect match for various applications.

LIGHTING INNOVATIONS

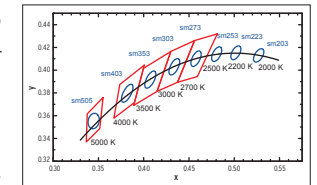
True Color ADONIS has an optimal rendition of the LED spectrum, meaning minimal color shift. This enables an easier combination with other luminaires within the same facade by offering an overall color consistency.

TjAway[®] Thermal Management ADONIS embeds the LED Linear[™] Tj Away[®] technology which provides optimal heat dissipation of the LED to the housing profile. This enables the miniaturization of the luminaire's footprint while ensuring an extended lifetime compared to conventional LED technologies.



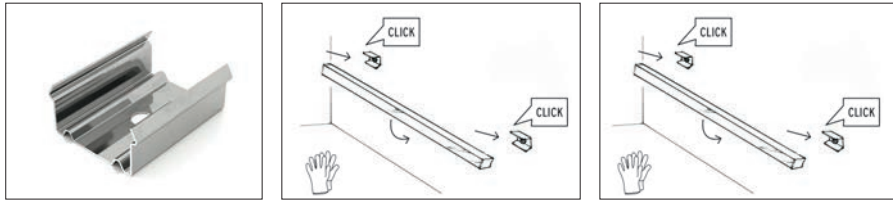
Experimental setup: 12 W/ft LED tape with thin flexible PCB mounted on flat aluminum plate LED temperature does not exceed 60°C (140°F).

One Bin Only Color consistency plays a key role as much as homogeneity in any linear lighting application. To ensure an outstanding quality of the light, LED Linear[™] introduced One Bin Only which ensures that all LEDs used in our luminaires are picked from one bin centered on the target CCT within a 3 step MacAdams Ellipse. They are used to determine visual color deviations and indicate differences in light color of individual LEDs. 3 step MacAdam ensures a color variation unnoticeable by the human eye and therefore an optimal lighting quality.

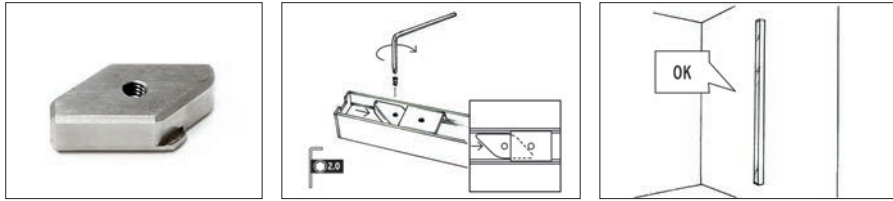


Black Body Curve ———
LED Linear[™] Binning ———
ANSI Binning ———

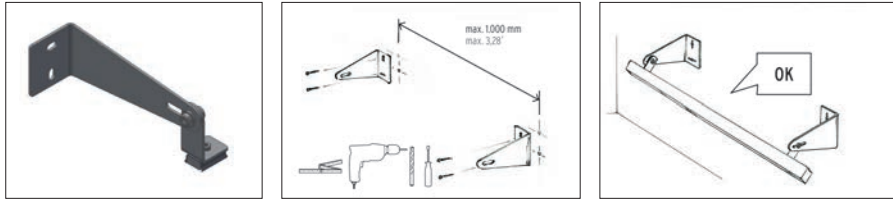
MOUNTING



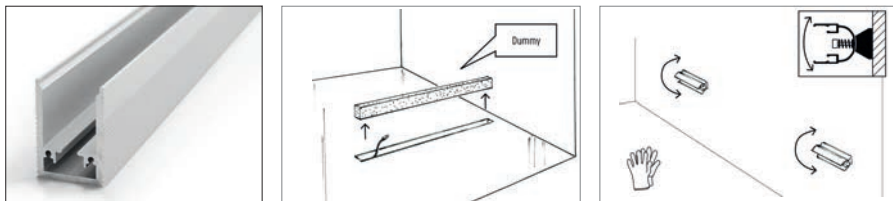
ADONIS is easily installed with the mounting clip



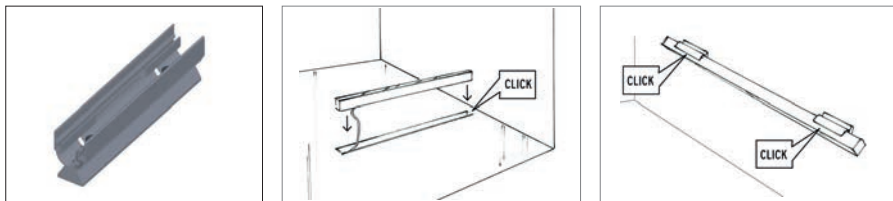
Vertical mount requires a mounting block



The adjustable wall mount set enables to tilt the fixture



In-ground channel improves drainage and protects the fixture



Adjustable mounting clip

Please see our detailed mounting instructions on the website

REFERENCES



Integration into lounge area floor



Straight light lines in ceiling



Illumination of entrance areas in public buildings or hotels



Highlighting façades

A | Photo: Akito Goto/ goto photo office

LED LINEAR™

lighting solutions

Member of the
Fagerhult Group



LED Linear™ USA, Inc.
2186 Liberty Drive
Niagara Falls, NY 14304
USA
Phone: +1 716 283 4400
usa@led-linear.com

www.ledlinearusa.com

Art.-#: 18485-ENG · Edition 02/2019 · All rights reserved. Subject to change.